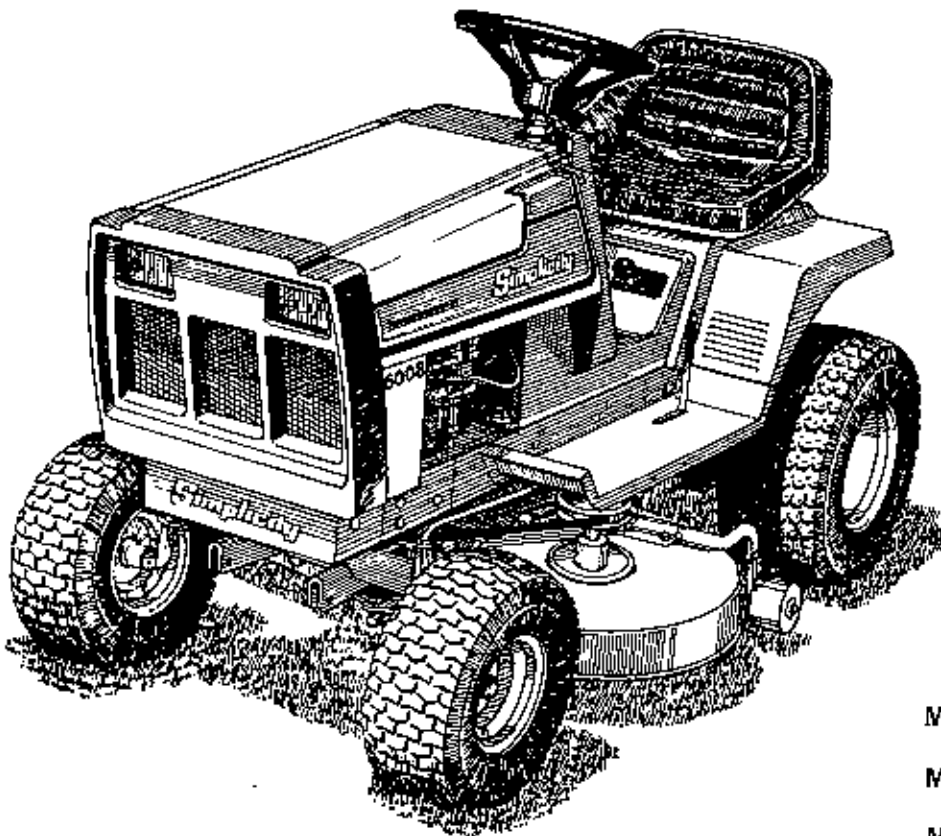


Simplicity

PARTS MANUAL

MODELS 6008 & 6010



8 HP TRACTOR
MFG. NO. 1690193
10 HP TRACTOR
MFG. NO. 1690192
36" MOWER
MFG. NO. 1690269
42" MOWER
MFG. NO. 1690210

Product Identification:

When ordering parts, keep your products serial number and manufacturer's number in mind. Variations may occur in a part between early and later model products, causing the product serial number to be listed in the parts description whenever these variations occur.

Record your I.D. numbers here for quick, future reference.

Product Mfg. No. _____ S/N _____ Mower Mfg. No. _____ S/N _____

Attention:

Standard torques appear in a chart at the end of the manual, while important individual torques are given on specific parts drawings.

CRITICAL and MAJOR notations point out important facts or instructions which relate to personal safety and proper machine operation. Any CRITICAL notation **C** which may appear in this book, pinpoints characteristics which, if not properly followed, can create a safety hazard. Any MAJOR notation **M** which may appear in this book, marks characteristics which, if not properly followed, may result in operating failure, shortened product life, or greatly reduced quality of the unit.

For your convenience, assembly notes are included in parts drawings to assist in repair and assembly of unit.

NOTE: Specifications may change without notice.

SIMPLICITY PRODUCTS FOR THE PROPER CARE OF EQUIPMENT
These genuine *Simplicity* products will help the owner extend the life of his equipment.

OILS - SPECIFICALLY BLENDED OF HIGH QUALITY BASE OILS & ADDITIVES.

Special Worm Gear (Rotical) Oil for use in all tillers and snowthrowers with worm gear auger drive. Required for protection of brass gears and mating parts. **Case of 12 Quarts, Part #1685100, Individual Quarts 118065.**

Multi-Purpose Hydraulic/Transmission Oil for use in most hydraulic applications, and hydrostatic and gear transmissions. Specific *Simplicity* applications: All hydrostatic transmissions, all bevel gear cases, all Broadmoor, Landlord, Sovereign, 4000, 6000, 7000 transmissions (except Peerless Gear Transmissions). (Not used in SunStar tractor transmission.) **Case of 12 Quarts, Part #1685516, 2½ Gallon Container, Part #1685539.**

2-Cycle Engine Oil, a premium lubricant for all 2-cycle air-cooled engines. **Case of 12 Part #1685517.**

SAE 5W 30 SF/CD Cold Weather Engine Oil for use in all four cycle and diesel engines at 30° temp. and under. **Case of 12 Quarts, Part # 1685576.**

SAE 15W40 SF/CD Engine Oil for gas and diesel engines, warm weather; see engine manufacturer recommendations. **Case of 12 Quarts, Part #1685554.**

Grease Gun Kit has 12" flexible hose to get into tight spots with ease. Kit contains: gun and 1-8 oz. tube of grease, **Part #1685510.** For replacement tube, order **Part # 103077.**

Pneumatic Tire Seal, seals all leaks including bead leaks and punctures up to 3/16 inch diameters. Prevents flats for tread life of tire. Available in following amounts.

Case of 12 - 11 Oz. Tubes **1685537**
Case of 24 - 11 Oz. Tubes **1685525**
5 Gallon Pail **1685527**

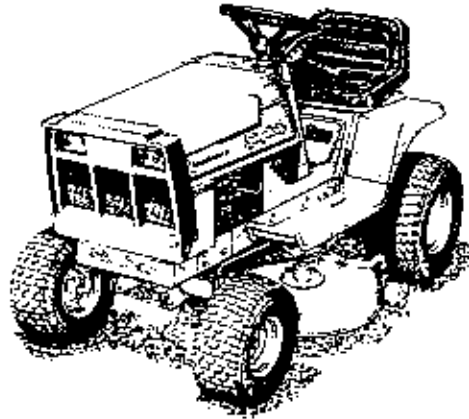
Touch-Up Paint keeps equipment in showroom condition.

| Spray Cans | Quarts | Daubbers 12/Ctn. |
|---|---------|--|
| *Simplicity Orange - 103262 (12 cans/1685179) | 1685037 | 1685520 - Mixed (6 Simp. Orange, 6 White) |
| **Classic Orange - 1685558 (12 cans/1685559) | 1685560 | 1685562 - Mixed (6 Classic Orange, 6-White) |
| White 103049 (12 cans/1685178) | 1685032 | 1685562 - Mixed (6-Classic Orange, 6-White) 1685520 - Mixed (6-Simp. Orange, 6-White) |
| Black - 1685551 (12 Cans/1685552) | N.A. | N.A. |
| *For 1977 thru early 1986 products. **For products produced after 12/1/85. | | |

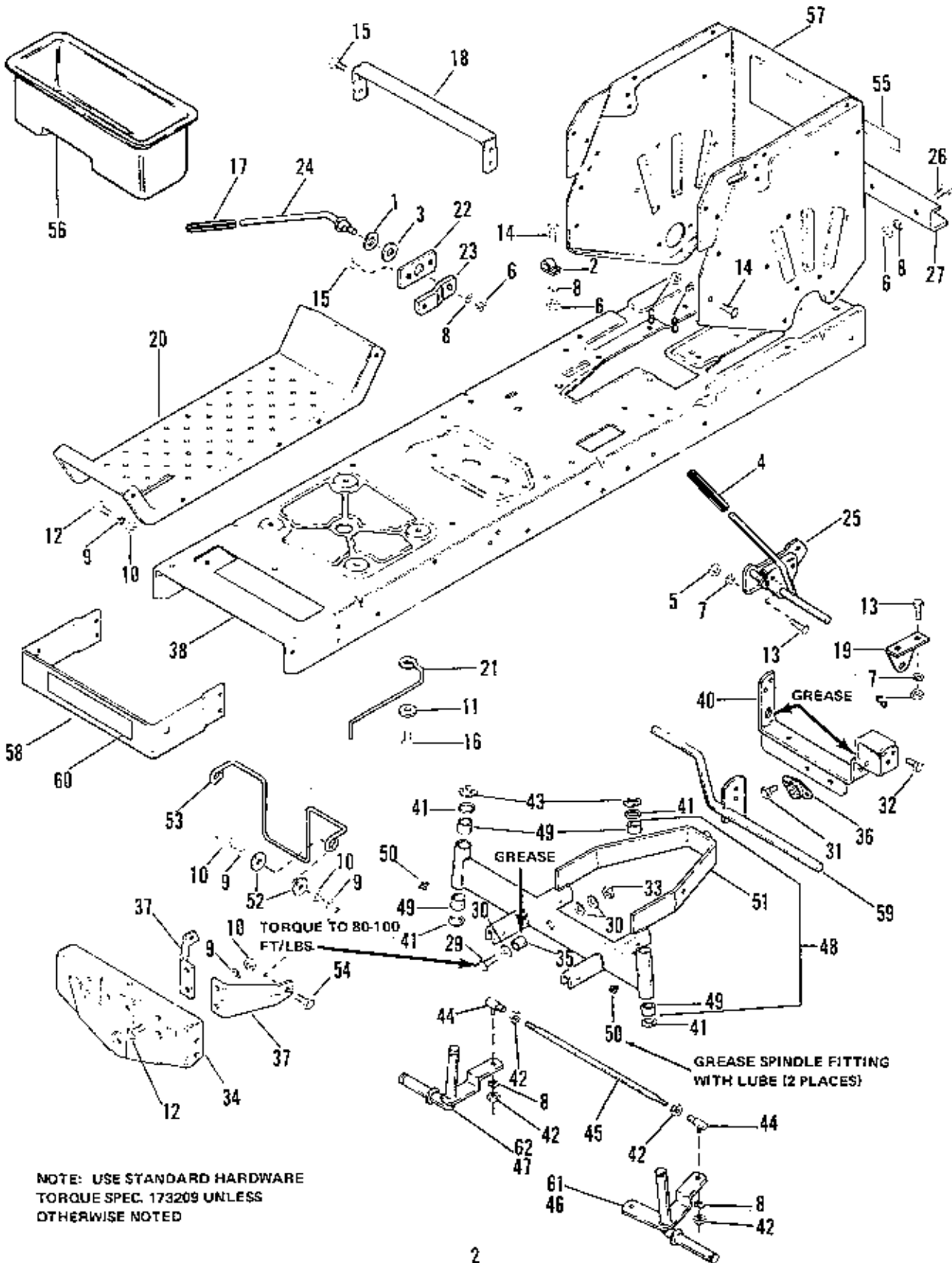
Simplicity Designer Seat Covers are double stitched, easy care vinyl. Keeps new seats new, makes worn seats look new.

- Small Cover for 4000, 5000, & 6100 Tractors **1685540**
- Large Cover for 6200, 7000 & 9000 Tractors **1685541**
- SunStar Seat Cover **1685577**

Extend Equipment Life - Use Only Genuine *Simplicity* Parts

Models 6008 & 6010**Table of Contents**

| | |
|---|-------------------|
| MAIN FRAME & FRONT AXLE (6008, 6010) | 2 |
| FRONT TIRES & STEERING (6008, 6010) | 4 |
| ENGINE & DRIVE (6008, 6010) | 6 |
| TRANSMISSION (6008, 6010) | 8 |
| BRAKE & CLUTCH (6008, 6010) | 12 |
| ELECTRICAL (6008, 6010) | 14 |
| HOOD, GRILLE & DASH (6008, 6010) | 16 |
| SEAT DECK & SEAT (6008, 6010) | 18 |
| 36" MOWER DECK & ARBORS | 20 |
| 36" CLUTCH & WHEEL SUPPORT | 22 |
| 36" ROLLER & MISC. | 24 |
| 42" MOWER DECK & ARBORS | 26 |
| 42" HEIGHT ADJUSTMENT & ROLLER | 30 |
| 42" DRIVE GROUP | 32 |
| 42" MISC.GROUP | 34 |
| STANDARD HARDWARE TORQUE SPECIFICATIONS | Inside Back Cover |



NOTE: USE STANDARD HARDWARE
TORQUE SPEC. 173209 UNLESS
OTHERWISE NOTED

Main Frame & Front Axle (6008, 6010)

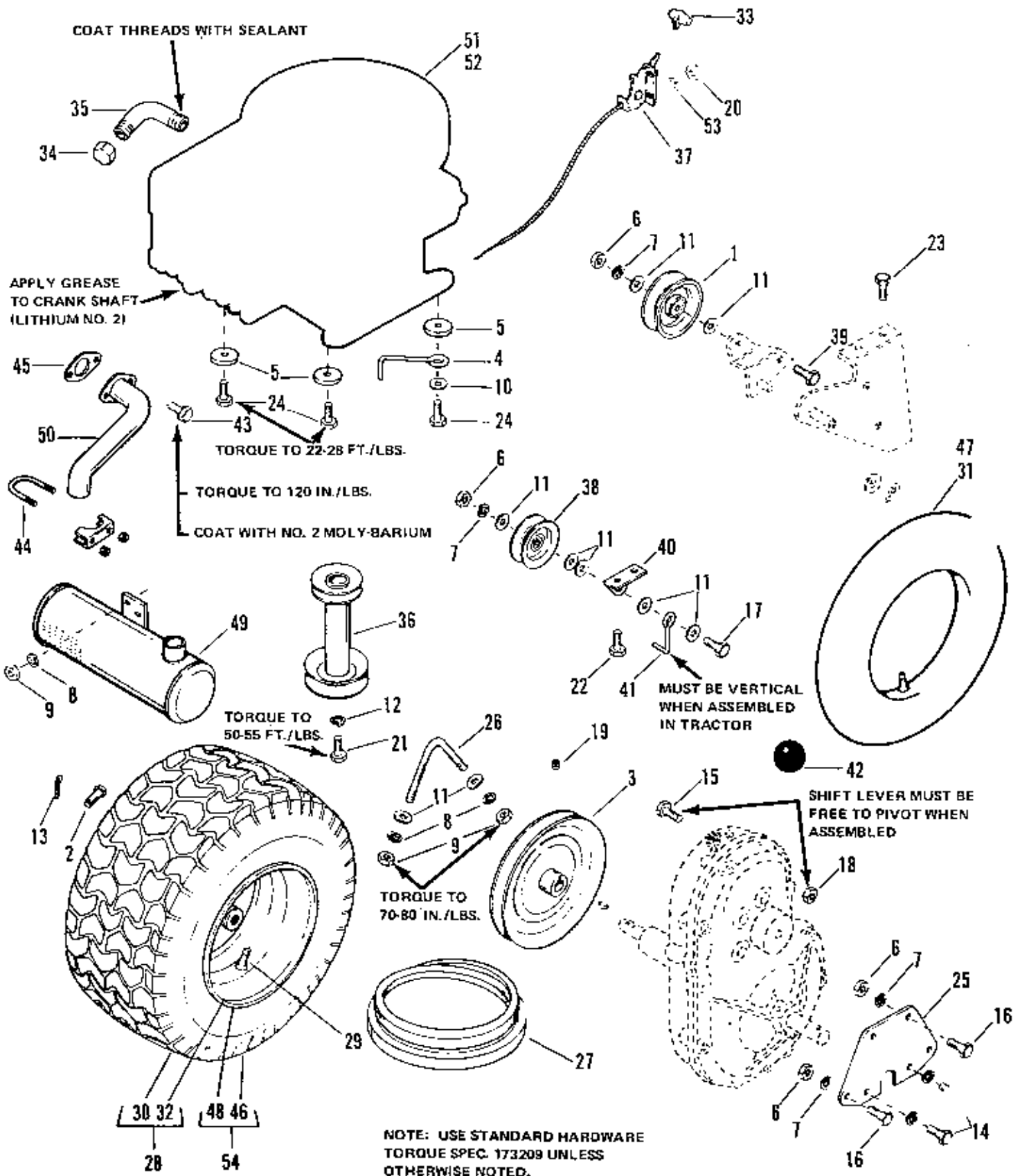
6-77

| Ref. No. | Part No. | Qty. | Serial No. | Description |
|----------|--------------|------|------------|--------------------------------------|
| 1 | 101025 | 1 | {00000}-{ | WASHER, Steel |
| 2 | 122186 | 1 | {00000}-{ | CLAMP |
| 3 | 156116 | 1 | {00000}-{ | WASHER, Nylon |
| 4 | 176934 | 1 | {00000}-{ | HANDLE, Grip |
| 5 | 916622 | 4 | {00000}-{ | NUT, Hex, 1/4-20 |
| 6 | 916950 | 11 | {00000}-{ | NUT, Hex, 3/8-16 |
| 7 | 916964 | 4 | {00000}-{ | LOCKWASHER, Spring, 1/4 |
| 8 | 916965 | 13 | {00000}-{ | LOCKWASHER, Spring, 3/8 |
| 9 | 917356 | 21 | {00000}-{ | LOCKWASHER, Spring, 5/16 |
| 10 | 917372 | 21 | {00000}-{ | NUT, Hex, 5/16-18 |
| 11 | 917642 | 1 | {00000}-{ | WASHER, Plain, 5/16 |
| 12 | 921332 | 17 | {00000}-{ | CAPSCREW, Hex Hd., 5/16-18 x 3/4 |
| 13 | 921959 | 4 | {00000}-{ | CAPSCREW, Hex Hd., 1/4-20 x 5/8 |
| 14 | 921965 | 7 | {00000}-{ | CAPSCREW, Hex Hd., 3/8-16 x 3/4 |
| 15 | 924856 | 6 | {00000}-{ | SCREW, Tapping, 5/16-18 x 1/2 |
| 16 | 925009 | 1 | {00000}-{ | SCREW, Tapping, 5/16-18 x 7/8 |
| 17 | 1851820 | 1 | {00000}-{ | GRIP |
| 18 | 1654707 | 1 | {00000}-{ | BRACE, Sear |
| 19 | 1654793 | 1 | {00000}-{ | SUPPORT, Clutch |
| 20 | 1656225 | 2 | {00000}-{ | FOOTREST |
| 21 | 1656858 | 1 | {00000}-{ | STOP, Belt |
| 22 | 1656754 | 1 | {00000}-{ | BAR, Support |
| 23 | 1656755 | 1 | {00000}-{ | ARM, Lift |
| 24 | 1656815 | 1 | {00000}-{ | HANDLE, Lift |
| 25 | 1663558 | 1 | {00000}-{ | LEVER ASSY, Clutch |
| 26 | 921210 | 3 | {00000}-{ | CAPSCREW, Hex Hd., 3/8-16 x 1 |
| 27 | 1655591 | 1 | {00000}-{ | BAR, Draw |
| 29 | 923154 | 1 | {00000}-{ | CAPSCREW, Hex Hd., 1/2-13 x 1-1/2 |
| 30 | 926192 | 3 | {00000}-{ | WASHER, Plain, 5/16 |
| 31 | 928730 | 2 | {00000}-{ | SCREW, Washer Hd., 3/8-16 x 1/2 |
| 32 | 930601 | 4 | {00000}-{ | SCREW, Hex Washer Hd., 5/16-18 x 5/8 |
| 33 | 930648 | 1 | {00000}-{ | LOCKNUT, 1/2-13 |
| 34 | 1652600 | 1 | {00000}-{ | FRONT AXLE SUPPORT |
| 35 | 1655034 | 1 | {00000}-{ | SPACER |
| 36 | 1656064 | 1 | {00000}-{ | BEARING ASSY, Side Range |
| 37 | 1655076 | 2 | {00000}-{ | BRACE, Front Axle |
| 38 | 1655808 | 1 | {00000}-{ | FRAME |
| 40 | 1657079 | 1 | {00000}-{ | SUPPORT ASSY, Axle |
| 41 | 108181 | 4 | {00000}-{ | WASHER |
| 42 | 918403 | 4 | {00000}-{ | NUT, Hex Jam, 3/8-24 |
| 43 | 927794 | 2 | {00000}-{ | RING, Retaining |
| 44 | 1610295 | 2 | {00000}-{ | BALL JOINT ASSY |
| 45 | 1652613 | 1 | {00000}-{ | TIE ROD |
| 46 | 1652663 | 1 | {00000}-{ | SPINDLE ASSY, L.H. (6010 Only) |
| 47 | 1652664 | 1 | {00000}-{ | SPINDLE ASSY, R.H. (6010 Only) |
| 48 | 1655268 | 1 | {00000}-{ | AXLE ASSY, Front |
| 49 | 154289 | 4 | {00000}-{ | BUSHING |
| 50 | 914687 | 2 | {00000}-{ | FITTING, Lube |
| 51 | NOT SERVICED | | {00000}-{ | FRONT AXLE, w/o Bushings |
| 52 | 917377 | 4 | {00000}-{ | WASHER, Plain, 1/4 |
| 53 | 1656396 | 1 | {00000}-{ | STOP, Belt |
| 54 | 920243 | 2 | {00000}-{ | CAPSCREW, Hex Hd., 5/16-18 x 1-1/2 |
| 55 | 1655708 | 1 | {00000}-{ | DECAL, Transaxle |
| 56 | 1655990 | 1 | {00000}-{ | TOOL TRAY |
| 57 | 1655812 | 1 | {00000}-{ | SUPPORT, Axle(Rear Frame) |
| 58 | 1656791 | 1 | {00000}-{ | SUPPORT |
| 59 | 1656851 | 1 | {00000}-{ | LEVER ASSY, Brake |
| 60 | 153166 | 1 | {00000}-{ | DECAL, Simplicity |
| 61 | 1656711 | 1 | {00000}-{ | SPINDLE ASSY, L.H. (6008 Only) |
| 62 | 1656712 | 1 | {00000}-{ | SPINDLE ASSY, R.H. (6008 Only) |

Front Tires & Steering Group (6008 & 6010)

6-77

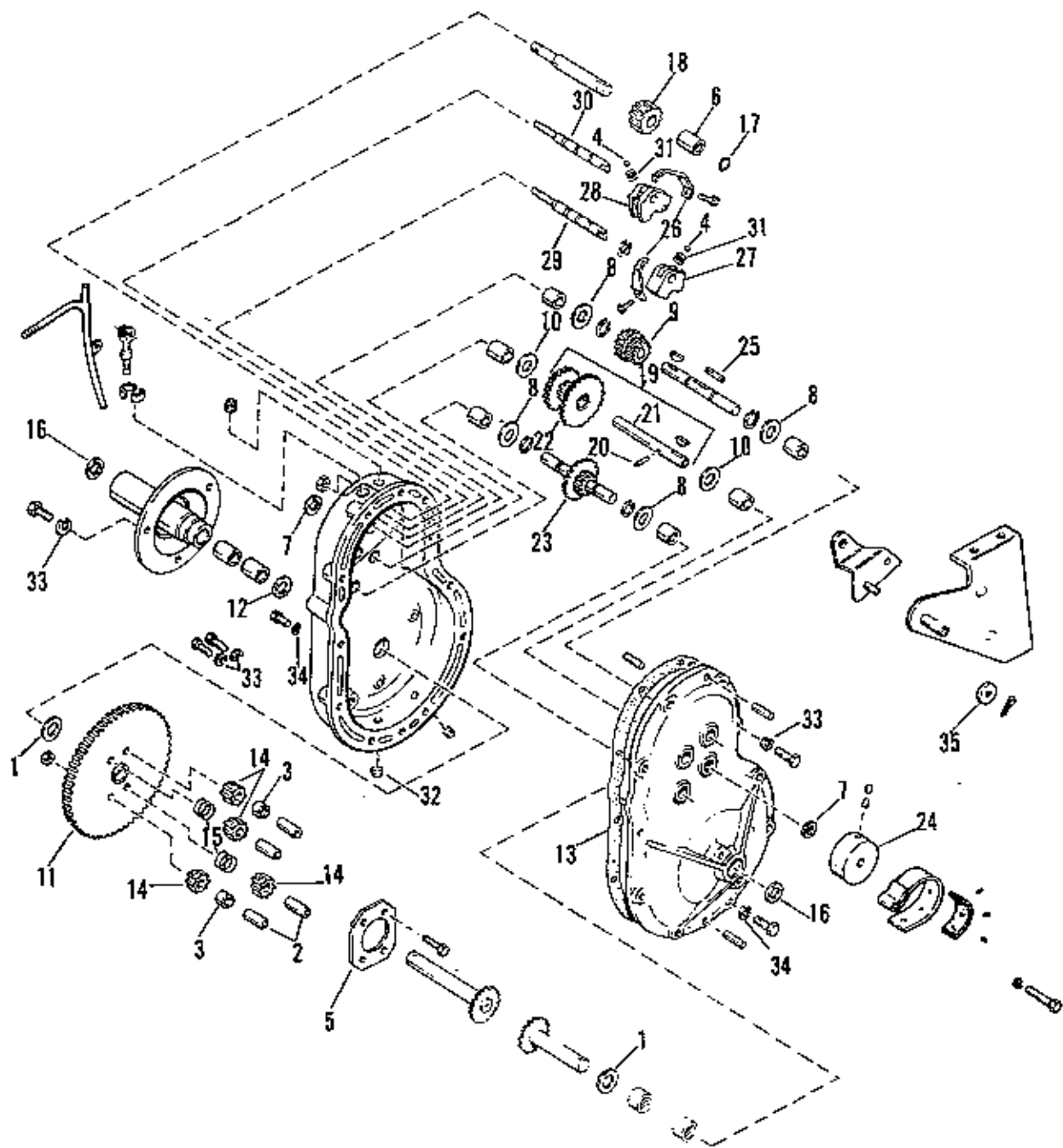
| Ref. No. | Part No. | Qty. | Serial No. | Description |
|----------|----------|------|-------------|---|
| 1 | 154071 | 2 | {00000}-{ } | WASHER |
| 2 | 916965 | 2 | {00000}-{ } | LOCKWASHER, Spring, 3/8 |
| 4 | 927557 | 4 | {00000}-{ } | LOCKNUT, Whiz, 5/16-18 |
| 5 | 918403 | 4 | {00000}-{ } | NUT, Hex Jam, 3/8-24 |
| 6 | 921333 | 4 | {00000}-{ } | CAPSCREW, Hex Hd., 5/16-18 x 1 |
| 7 | 927794 | 2 | {00000}-{ } | RING, Retaining |
| 8 | 1653617 | 2 | {00000}-{ } | WHEEL & TIRE ASSY, 15 x 6.00-6 |
| 9 | 163111 | 4 | {00000}-{ } | BEARING, Relief |
| 10 | 171270 | 2 | {00000}-{ } | VALVE, Stem & Cap |
| 11 | 1653615 | 2 | {00000}-{ } | WHEEL & BUSHING ASSY, 15-6 |
| 12 | 1653618 | 2 | {00000}-{ } | TIRE, 15 x 6.00-6, Carlisle |
| 13 | 1656885 | 2 | {00000}-{ } | GOODYEAR TIRE, 15 x 6.00-6 |
| 14 | 1653670 | 1 | {00000}-{ } | BEARING |
| 15 | 1610295 | 2 | {00000}-{ } | BALL JOINT ASSY |
| 16 | 1656750 | 1 | {00000}-{ } | DRAG LINK ASSY |
| 17 | 1657016 | 1 | {00000}-{ } | WHEEL, Steering |
| 18 | 1657017 | 1 | {00000}-{ } | CAP, Steering Wheel |
| 19 | 157332 | 1 | {00000}-{ } | KEY |
| 20 | 176440 | 4 | {00000}-{ } | BUSHING |
| 21 | 177649 | 1 | {00000}-{ } | WASHER, Compression |
| 22 | 923422 | 1 | {00000}-{ } | LOCKNUT, Hex Full, 5/16-18 |
| 23 | 930540 | 2 | {00000}-{ } | SCREW, Set, Sq.Hd. Cup Pt., 5/16-18 x 5/8 |
| 24 | 1652741 | 1 | {00000}-{ } | GEAR, Steering |
| 25 | 1652743 | 1 | {00000}-{ } | BASE PLATE, Steering |
| 26 | 1652745 | 1 | {00000}-{ } | TOP PLATE, Steering |
| 27 | 1654649 | 1 | {00000}-{ } | SPACER, Stop |
| 28 | 1654907 | 1 | {00000}-{ } | SPACER |
| 29 | 1657003 | 1 | {00000}-{ } | SHAFT ASSY, Steering |
| 30 | 1657248 | 1 | {00000}-{ } | ROD, Steering |



| Ref. No. | Part No. | Qty. | Serial No. | Description |
|----------|----------|------|------------|--|
| 1 | 106716 | 1 | {00000}-I | PULLEY, Idler |
| 2 | 118053 | 2 | {00000}-I | PIN |
| 3 | 156119 | 1 | {00000}-I | PULLEY, Transmission |
| 4 | 172844 | 2 | {00000}-I | STOP, Belt |
| 5 | 172908 | 4 | {00000}-I | WASHER |
| 6 | 916950 | 6 | {00000}-I | NUT, Hex 3/8-16 |
| 7 | 916965 | 8 | {00000}-I | LOCKWASHER, Spring, 3/8 |
| * 8 | 917356 | 4 | {00000}-I | LOCKWASHER, Spring, 5/16 |
| ** 9 | 917372 | 4 | {00000}-I | NUT, Hex, 5/16-18 |
| 10 | 917378 | 2 | {00000}-I | WASHER, Plain, 3/8 |
| 11 | 917642 | 9 | {00000}-I | WASHER, Plain, 5/16 |
| 12 | 918199 | 1 | {00000}-I | LOCKWASHER, Spring, 7/16 |
| 13 | 918451 | 2 | {00000}-I | PIN, Cotter, 1/8 x 3/4 |
| 14 | 921210 | 2 | {00000}-I | CAPSCREW, Hex Hd., 3/8-16 x 1 |
| 15 | 921960 | 1 | {00000}-I | CAPSCREW, Hex Hd., 1/4-20 x 1 |
| 16 | 921965 | 4 | {00000}-I | CAPSCREW, Hex Hd., 3/8-16 x 3/4 |
| 17 | 921971 | 1 | {00000}-I | CAPSCREW, Hex Hd., 3/8-16 x 1-1/2 |
| 18 | 923358 | 1 | {00000}-I | LOCKNUT, Hex, 1/4-20 |
| 19 | 924624 | 1 | {00000}-I | SCREW, Set Hex Skt., 3/8-24 x 3/8 |
| 20 | 916622 | 2 | {00000}-I | NUT, Plain, 1/4 |
| 21 | 928038 | 1 | {00000}-I | CAPSCREW, Hex Hd., 7/16-20 x 1 1/4 |
| 22 | 929000 | 2 | {00000}-I | SCREW, Hex Washer Hd., 1/4-20 x 3/8 |
| 23 | 930601 | 2 | {00000}-I | SCREW, Hex Washer Hd., 5/16-18 x 5/8 |
| 24 | 930603 | 4 | {00000}-I | SCREW, Hex Washer Hd., 3/8-16 x 3/4 |
| 25 | 1653885 | 1 | {00000}-I | SUPPORT, Bracket |
| 26 | 1655084 | 1 | {00000}-I | BOLT, Axle |
| 27 | 165048 | 1 | {00000}-I | V-BELT, Drive |
| 28 | 1655744 | 2 | {00000}-I | WHEEL & TIRE ASSY, 18 x 9.50-8 (6008) |
| 29 | 156305 | 2 | {00000}-I | VALVE, Stem & Cap (6008, 6010) |
| 30 | 156312 | 2 | {00000}-I | TIRE (6008) |
| 31 | 156380 | 2 | {00000}-I | TUBE (6008) |
| 32 | 1656905 | 2 | {00000}-I | WHEEL ASSY (6008) |
| 33 | 1656099 | 1 | {00000}-I | KNOB |
| 34 | 901752 | 1 | {00000}-I | PIPE, Cap, 3/8 |
| 35 | 1655405 | 1 | {00000}-I | OIL DRAIN PIPE |
| 36 | 1657118 | 1 | {00000}-I | PULLEY ASSY, Engine |
| 37 | 1657272 | 1 | {00000}-I | CONTROL ASSY |
| 38 | 154534 | 1 | {00000}-I | PULLEY, Idler |
| 39 | 928726 | 1 | {00000}-I | CAPSCREW, Hex Hd., 3/8-16 x 1 1/4 |
| 40 | 1655144 | 1 | {00000}-I | BRACKET, Idler |
| 41 | 1656054 | 1 | {00000}-I | STOP, Belt |
| 42 | 8021050 | 1 | {00000}-I | BALL, Knob |
| 43 | 930691 | 2 | {00000}-I | SCREW, Hex Whiz Lock, 5/16-18 x 3/4 (6010) |
| 44 | 931893 | 1 | {00000}-I | CLAMP, Exhaust 1 1/4 (6010) |
| 45 | 1650670 | 1 | {00000}-I | GASKET, Muffler |
| 46 | 173456 | 2 | {00000}-I | TIRE, Tubeless (6010) |
| 47 | 1651866 | 1 | {00000}-I | TUBE (6010) |
| 48 | 1655743 | 1 | {00000}-I | WHEEL, 6" x 10" D (6010) |
| 49 | 1655848 | 1 | {00000}-I | MUFFLER (6010) |
| 50 | 1655860 | 1 | {00000}-I | PIPE, Exhaust (6010) |
| 51 | | 1 | {00000}-I | ENGINE, 8 H.P. Synchro-Balanced (6008) |
| 52 | | 1 | {00000}-I | ENGINE, 10 H.P. (6010) |
| 53 | 916964 | 2 | {00000}-I | LOCKWASHER, 1/4 |
| 54 | 1655742 | 2 | {00000}-I | WHEEL & TIRE ASSY, 20 x 8.00-10 (6010) |

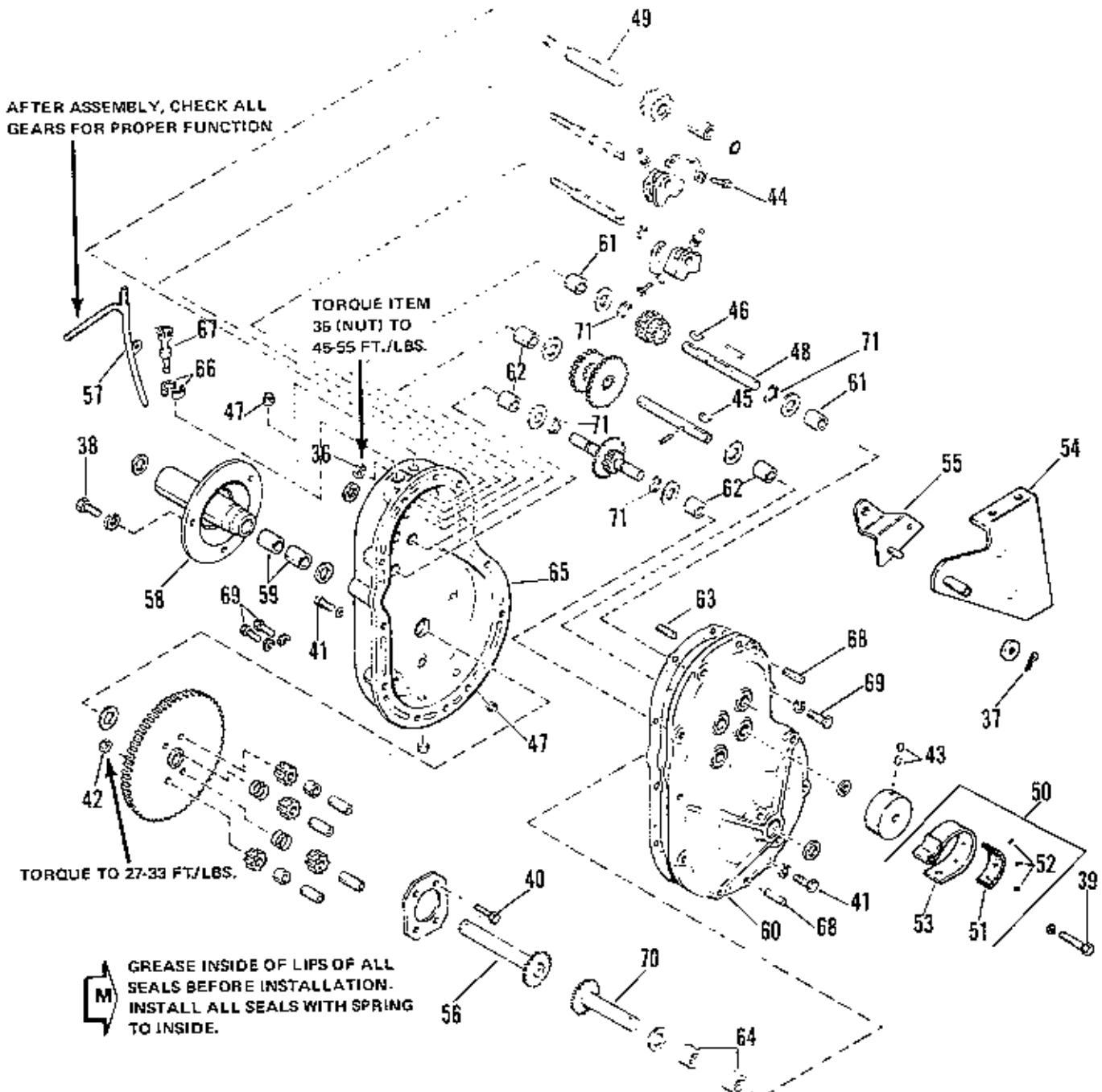
* NOTE: Ref. No. 8 Qty. 2 used
on 6008

** NOTE: Ref. No. 9 Qty. 2 used
on 6008



| Ref. No. | Part No. | Qty. | Serial No. | Description |
|----------|----------|------|-------------|-------------------------|
| 1 | 175311 | 2 | {00000}-{ } | WASHER |
| 2 | 121083 | 4 | {00000}-{ } | SPACER, Pinion Diff. |
| 3 | 121084 | 2 | {00000}-{ } | SPACER, Diff. |
| 4 | 905359 | 2 | {00000}-{ } | BALL, Shiftlock |
| 5 | 171517 | 1 | {00000}-{ } | PLATE, Diff. |
| 6 | 156082 | 1 | {00000}-{ } | BEARING, Roller |
| 7 | 156084 | 3 | {00000}-{ } | O RING |
| 8 | 156085 | 4 | {00000}-{ } | WASHER |
| 9 | 156087 | 1 | {00000}-{ } | PINION ASSY, Hi & Lo |
| 10 | 156089 | 2 | {00000}-{ } | WASHER |
| 11 | 1657949 | 1 | {00000}-{ } | GEAR ASSY, Drive |
| 12 | 156099 | 1 | {00000}-{ } | SEAL, Oil |
| 13 | 156103 | 1 | {00000}-{ } | GASKET, Case |
| 14 | 158579 | 4 | {00000}-{ } | PINION, Diff. |
| 15 | 162085 | 2 | {00000}-{ } | SPRING |
| 16 | 163012 | 2 | {00000}-{ } | SEAL, Oil |
| 17 | 165006 | 1 | {00000}-{ } | RING, "O" |
| 18 | 1650625 | 1 | {00000}-{ } | PINION, Reverse |
| 19 | 165009 | 1 | {00000}-{ } | SHAFT & GEAR ASSY |
| 20 | 156292 | 1 | {00000}-{ } | DOWEL, Pin |
| 21 | | 1 | {00000}-{ } | SHAFT, Brake |
| 22 | | 1 | {00000}-{ } | CLUSTER GEAR ASSY |
| 23 | 165013 | 1 | {00000}-{ } | GEAR & SHAFT ASSY |
| 24 | 165067 | 1 | {00000}-{ } | DRUM, Brake |
| 25 | 170453 | 1 | {00000}-{ } | KEY |
| 26 | 1657656 | 2 | {00000}-{ } | SPRING |
| 27 | 171363 | 1 | {00000}-{ } | FORK, Shift Rev. |
| 28 | 171364 | 1 | {00000}-{ } | FORK, Shift 1 & 2 |
| 29 | 171365 | 1 | {00000}-{ } | SHAFT, Shift, Rev & Lo |
| 30 | 171372 | 1 | {00000}-{ } | SHAFT, Shift Hi & Lo |
| 31 | 171456 | 2 | {00000}-{ } | SPRING |
| 32 | 901653 | 1 | {00000}-{ } | PIPE, Plug, Sq Hd., 3/8 |
| 33 | 916965 | 6 | {00000}-{ } | LOCKWASHER, Spring 3/8 |
| 34 | 917356 | 11 | {00000}-{ } | LOCKWASHER, Spring 5/16 |
| 35 | 917377 | 1 | {00000}-{ } | WASHER, Plain 1/4 |

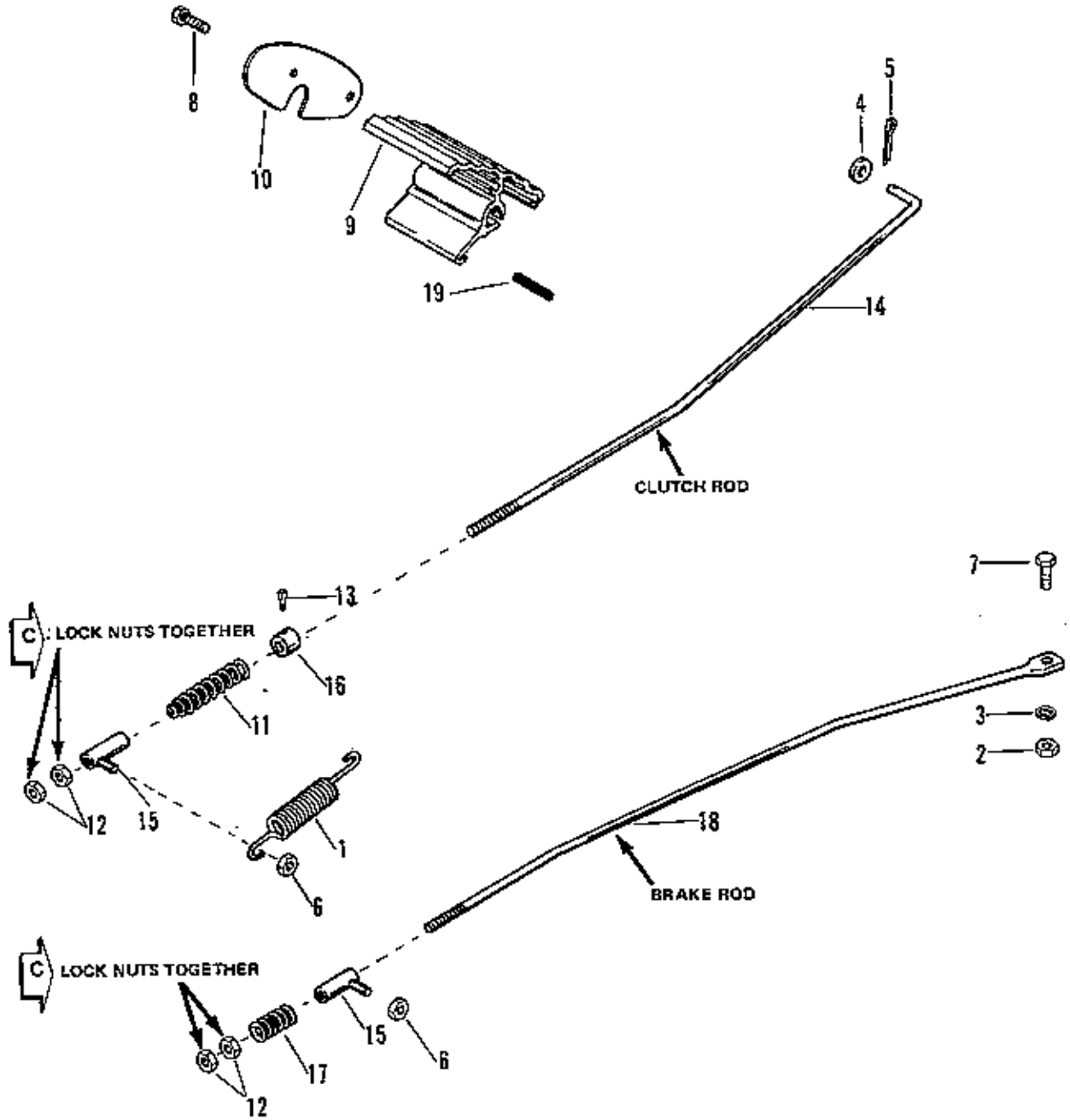
NOTE: PARTS INFORMATION CONTINUED FROM PREVIOUS DRAWING



Transmission Sub-Assembly (6008, 6010)

| Ref. No. | Part No. | Qty. | Serial No. | Description |
|----------|---------------------------------|------|-------------|---------------------------------------|
| 36 | 918213 | 3 | {00000}-{ } | NUT, Hex, 7/16-14 |
| 37 | 918451 | 1 | {00000}-{ } | PIN, Cotter, 1/4 x 3/4 |
| 38 | 919357 | 3 | {00000}-{ } | CAPSCREW, Hex Hd., 3/8-16 x 7/8 |
| 39 | 921221 | 1 | {00000}-{ } | CAPSCREW, Hex Hd., 5/16-18 x 1-1/2 |
| 40 | 921972 | 4 | {00000}-{ } | CAPSCREW, Hex Hd., 3/8-16 x 2-1/2 |
| 41 | 921977 | 10 | {00000}-{ } | CAPSCREW, Hex Hd., 5/16-18 x 1-1/4 |
| 42 | 923428 | 4 | {00000}-{ } | LOCKNUT, Hex, Full, 3/8-16 |
| 43 | 928691 | 2 | {00000}-{ } | SCREW, Set Hex Skt., 5/16-18 x 5/16 |
| 44 | 930614 | 2 | {00000}-{ } | SCREW, Hex Washer Hd., 5/16-18 x 5/16 |
| 45 | 930669 | 1 | {00000}-{ } | KEY, Hi Pro, 5/32 x 5/8 |
| 46 | 930670 | 1 | {00000}-{ } | KEY, Hi Pro, 3/16 x 3/4 |
| 47 | 930676 | 2 | {00000}-{ } | PIPE, Bushing, 3/4 |
| 48 | 1653526 | 1 | {00000}-{ } | SHAFT, Input |
| 49 | 1653527 | 1 | {00000}-{ } | SHAFT, Reverse Pinion |
| 50 | 1653534 | 1 | {00000}-{ } | BAND ASSY, Brake |
| 51 | 158136 | 1 | {00000}-{ } | LINING, Brake |
| 52 | 926021 | 3 | {00000}-{ } | RIVET, Tubular, 3/16 x 1/4 |
| 53 | AVAILABLE ONLY WITH REF. No. 50 | | | BAND, Brake |
| 54 | 1663552 | 1 | {00000}-{ } | SUPPORT ASSY, Transmission |
| 55 | 162022 | 1 | {00000}-{ } | IDLER LEVER ASSY |
| 56 | 1655138 | 1 | {00000}-{ } | AXLE ASSY, R. H. |
| 57 | 1657971 | 1 | {00000}-{ } | ROD ASSY, Shift |
| 58 | 1655276 | 1 | {00000}-{ } | HOUSING ASSY, Axle w/Bearings |
| 59 | 1657807 | 2 | {00000}-{ } | BUSHING |
| 60 | 1655286 | 1 | {00000}-{ } | COVER, Sub-Assembly-Gear Case |
| 61 | 156072 | 2 | {00000}-{ } | BEARING |
| 62 | 156073 | 4 | {00000}-{ } | BEARING, Roller |
| 63 | 156308 | 2 | {00000}-{ } | PIN, Sub-Assembly, Roll |
| 64 | 157679 | 2 | {00000}-{ } | BEARING, Roller |
| 65 | 1655991 | 1 | {00000}-{ } | GEAR CASE SUB-ASSY |
| 66 | 101042 | 2 | {00000}-{ } | BUSHING |
| 67 | 156031 | 1 | {00000}-{ } | ROD ASSY, Shift |
| 68 | 918113 | 2 | {00000}-{ } | PIN, Spring, 3/8 x 1 |
| 69 | 921965 | 3 | {00000}-{ } | CAPSCREW, Hex Hd., 3/8-16 x 3/4 |
| 70 | 1656915 | 1 | {00000}-{ } | AXLE ASSY, L. H. |
| 71 | 8081048 | 4 | {00000}-{ } | RING, Retaining |

APPLY GREASE TO I.D. OF
PEDAL HUB BEFORE ASSEMBLY



NOTE: USE STANDARD HARDWARE
TORQUE SPEC. 173209 UNLESS
OTHERWISE NOTED.

| Ref. No. | Part No. | Qty. | Serial No. | Description |
|----------|----------|------|-------------|-------------------------------------|
| 1 | 165068 | 1 | {00000}-{ } | SPRING, Return |
| 2 | 916622 | 1 | {00000}-{ } | NUT, Hex 1/4-20 |
| 3 | 916964 | 1 | {00000}-{ } | LOCKWASHER, Spring 1/4 |
| 4 | 917377 | 1 | {00000}-{ } | WASHER, Plain 1/4 |
| 5 | 918447 | 1 | {00000}-{ } | PIN, Cotter 3/32 x 3/4 |
| 6 | 923362 | 2 | {00000}-{ } | LOCKNUT, Hex 5/16-18 |
| 7 | 927340 | 1 | {00000}-{ } | CAPSCREW, Hex Hd., 1/4-20 x 3/4 |
| 8 | 927429 | 2 | {00000}-{ } | SCREW, Hex Washer Hd. 1/4-20 x 5/8 |
| 9 | 1656852 | 1 | {00000}-{ } | PEDAL, Foot |
| 10 | 1656854 | 1 | {00000}-{ } | PLATE, End |
| 11 | 167041 | 1 | {00000}-{ } | SPRING, Compression |
| 12 | 917372 | 4 | {00000}-{ } | NUT, Hex, 5/16-18 |
| 13 | 928804 | 1 | {00000}-{ } | SCREW, Set Sq Hd Cup., 1/4-20 x 3/8 |
| 14 | 1655270 | 1 | {00000}-{ } | ROD, Clutch |
| 15 | 1655696 | 2 | {00000}-{ } | GUIDE ASSY, Rod |
| 16 | 8191022 | 1 | {00000}-{ } | COLLAR, Set |
| 17 | 173575 | 1 | {00000}-{ } | SPRING |
| 18 | 1654156 | 1 | {00000}-{ } | ROD, Brake |
| 19 | 1657322 | 1 | {00000}-{ } | DAMPER |

PARKING BRAKE AND CLUTCH ADJUSTMENT PROCEDURE

A- Parking Brake:

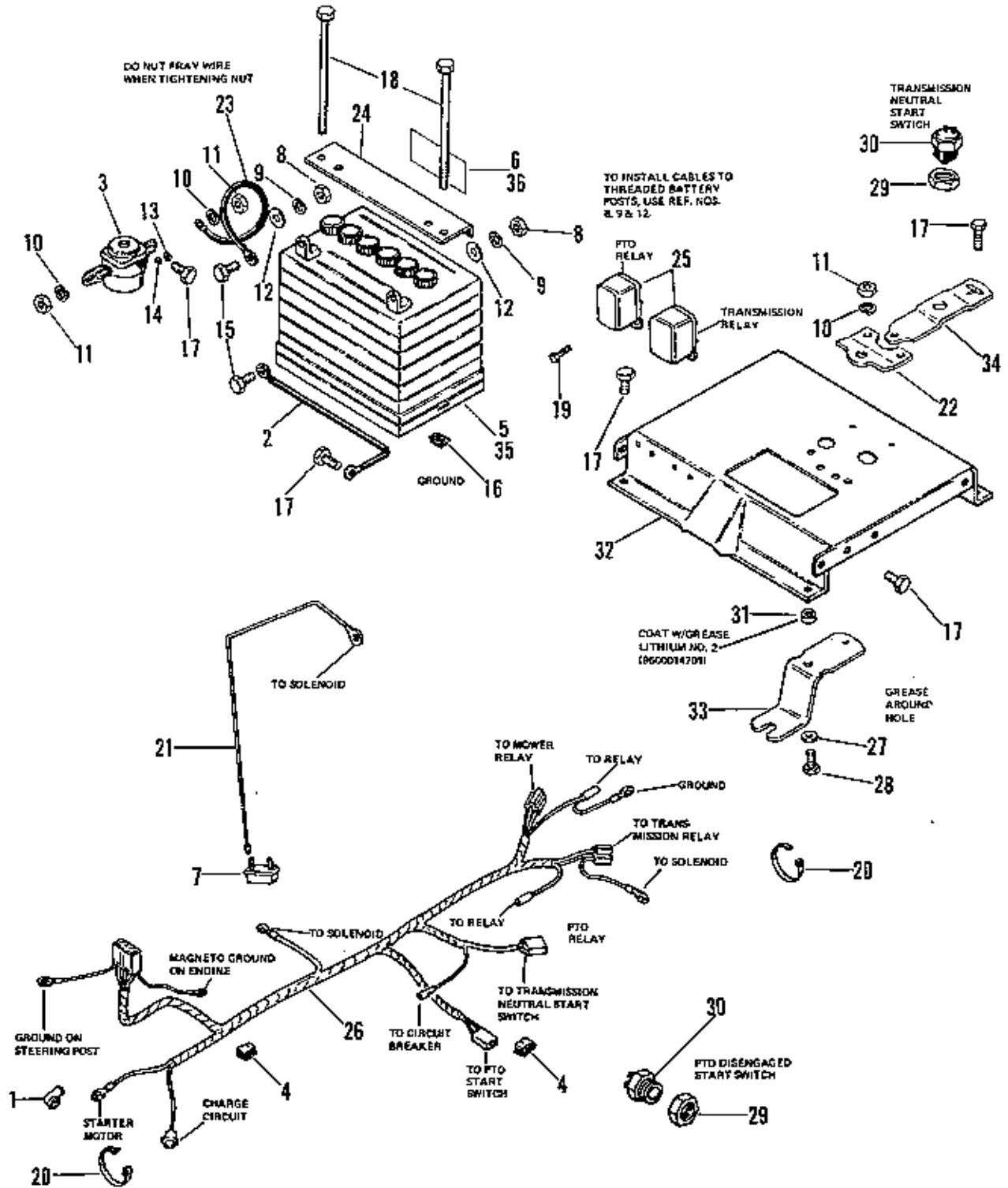
(Long end of rod guide, item 15, is orientated toward the front of the tractor).

- 1- Pull the brake rod, item 18, firmly forward (to equal 20 to 25 lb. force) to insure that the brake band is seated to the brake drum.
- 2- Adjust item 12, 5/16 full nuts on the threaded end of the brake rod so the clearance between the nut and spring, item 17, is 7/16" to 9/16".

B- Clutch Adjustment:

(Long end of rod guide, item 15, is orientated towards the rear of the tractor).

- 1- Clutch pedal disengaged (pedal up), apply 15 to 22 lbs. force to the clutch idler pulley, 106716, to firmly seat the belt. Adjust the full nuts, item 12, so the clearance between the nuts and rod guide end is 3/16 to 5/16".
- 2- Fully depress clutch pedal and set parking brake. Grasp clutch rod, item 14, and apply sufficient force to the rod to insure that no clearance exists between the rod guide end and adjusting nuts.
- 3- (Conical spring, item 11, is to be installed with small diameter end orientated toward rod guide). Adjust set collar, item 16, on clutch rod so spring, item 11 is compressed 7/16" to 1/2".

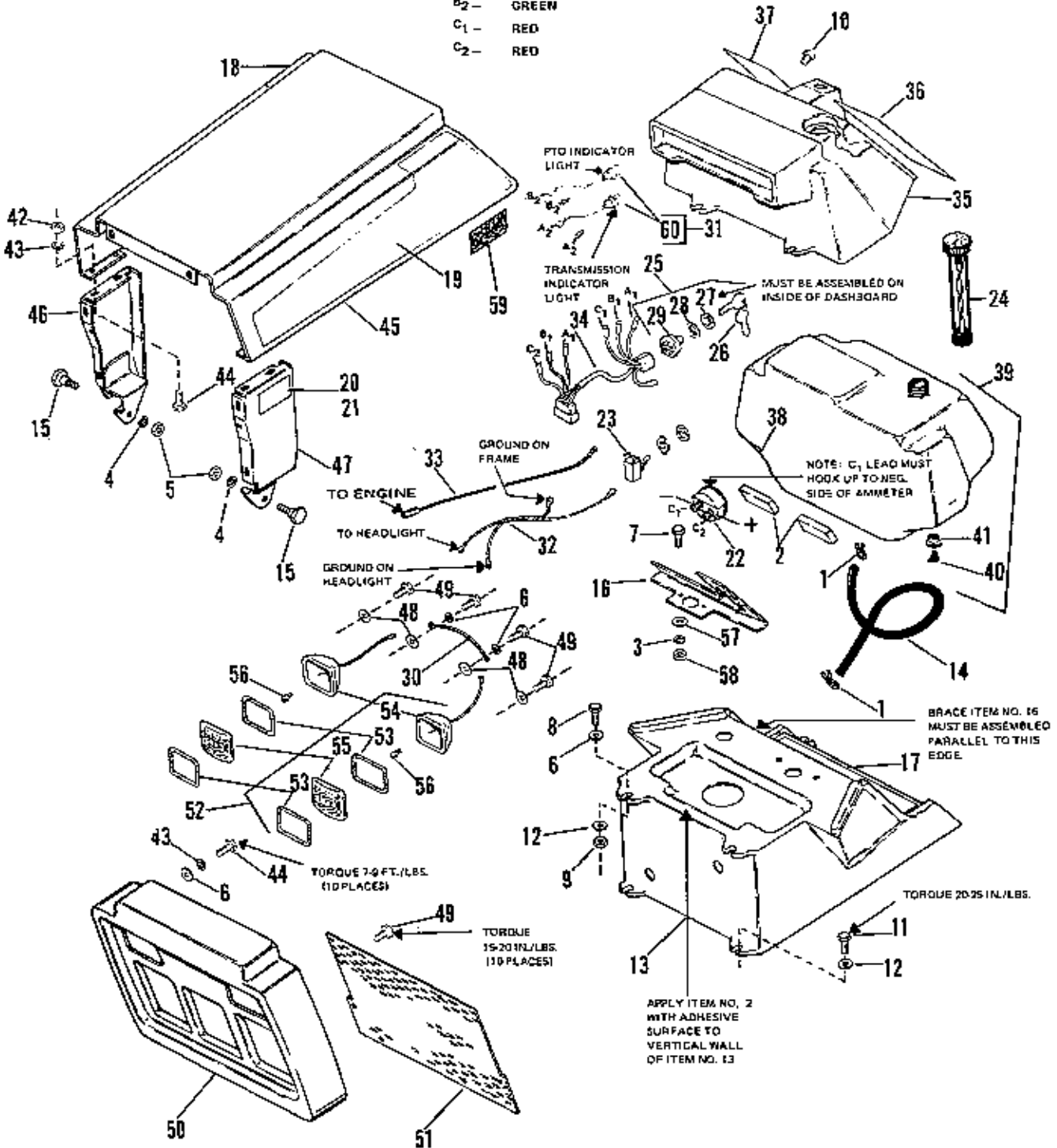


| Ref. No. | Part No. | Qty. | Serial No. | Description |
|----------|----------|------|-------------|--|
| 1 | 122023 | 1 | {00000}-{ } | COVER, Terminal |
| 2 | 122213 | 1 | {00000}-{ } | CABLE |
| 3 | 122216 | 1 | {00000}-{ } | SOLENOID |
| 4 | 165073 | 2 | {00000}-{ } | CLIP, Speed |
| 5 | | 1 | {00000}-{ } | BATTERY (6008) |
| 6 | | 1 | {00000}-{ } | FILM, Battery (6008) |
| 7 | 172163 | 1 | {00000}-{ } | BREAKER, Circuit |
| 8 | 916622 | 2 | {00000}-{ } | NUT, Hex, 1/4-20 |
| 9 | 916964 | 2 | {00000}-{ } | LOCKWASHER, Spring, 1/4 |
| 10 | 917356 | 3 | {00000}-{ } | LOCKWASHER, Spring, 5/16 |
| 11 | 917372 | 3 | {00000}-{ } | NUT, Hex, 5/16-18 |
| 12 | 917377 | 2 | {00000}-{ } | WASHER, Plain, 1/4 |
| 13 | 917415 | 1 | {00000}-{ } | NUT, Hex Mach., No. 10 |
| 14 | 922711 | 1 | {00000}-{ } | LOCKWASHER, Ext. No.10 |
| 15 | 923341 | 2 | {00000}-{ } | CAPSCREW, Hex Hd., 1/4-20 x 3/4 (6008) |
| 16 | 926022 | 2 | {00000}-{ } | NUT, Retainer, 1/4-20 |
| 17 | 927428 | 15 | {00000}-{ } | SCREW, Hex Washer Hd, 1/4-20 x 3/8 |
| 18 | 928634 | 2 | {00000}-{ } | CAPSCREW, Hex Hd., 1/4-20 x 7 |
| 19 | 930561 | 4 | {00000}-{ } | SCREW, Hex Hd., No. 14 x 3/4 |
| 20 | 1604414 | 2 | {00000}-{ } | TIE, Cable |
| 21 | 1651031 | 1 | {00000}-{ } | WIRE ASSY |
| 22 | 1655264 | 1 | {00000}-{ } | PIVOT, Shift Lever |
| 23 | 1655522 | 1 | {00000}-{ } | CABLE |
| 24 | 1655890 | 1 | {00000}-{ } | HOLD DOWN, Battery |
| 25 | 1656036 | 2 | {00000}-{ } | RELAY, 12 Volt |
| 26 | 1657350 | 1 | {00000}-{ } | HARNES, Lower |
| 27 | 157643, | 1 | {00000}-{ } | WASHER |
| 28 | 921333 | 1 | {00000}-{ } | CAPSCREW, Hex Hd., 5/16-18 x 1 |
| 29 | 930647 | 2 | {00000}-{ } | LOCKNUT, 9/16-18 |
| 30 | 1654634 | 2 | {00000}-{ } | SWITCH, Interlock |
| 31 | 1655085 | 1 | {00000}-{ } | SPACER |
| 32 | 1655087 | 1 | {00000}-{ } | SUPPORT, Frame |
| 33 | 1655265 | 1 | {00000}-{ } | LEVER, Switch |
| 34 | 1655746 | 1 | {00000}-{ } | BRACKET, Switch |
| 35 | 1685063 | 1 | {00000}-{ } | BATTERY (6010) |
| 36 | | 1 | {00000}-{ } | FILM, Battery (6010) |

* For 6008 Battery Service Order Kit No. 1685059

NOTE: WIRE LEAD COLORS

- A₁ - YELLOW
- A₂ - GREEN
- B₁ - ORANGE
- B₂ - GREEN
- C₁ - RED
- C₂ - RED

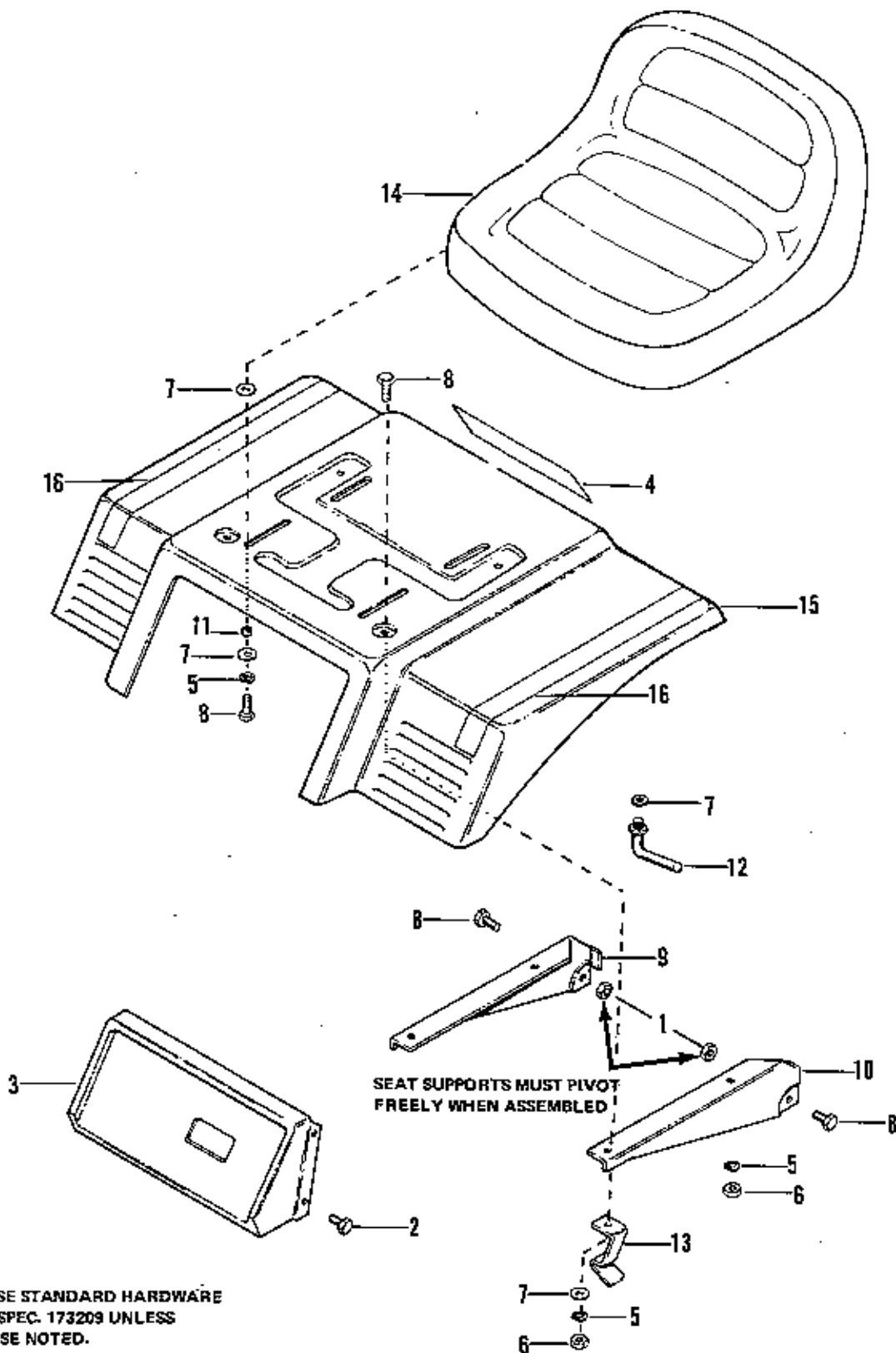


NOTE: USE STANDARD HARDWARE
 TORQUE SPEC. NO. 173208 UNLESS
 OTHERWISE NOTED.

Hood, Grille & Dash (6008,6010)

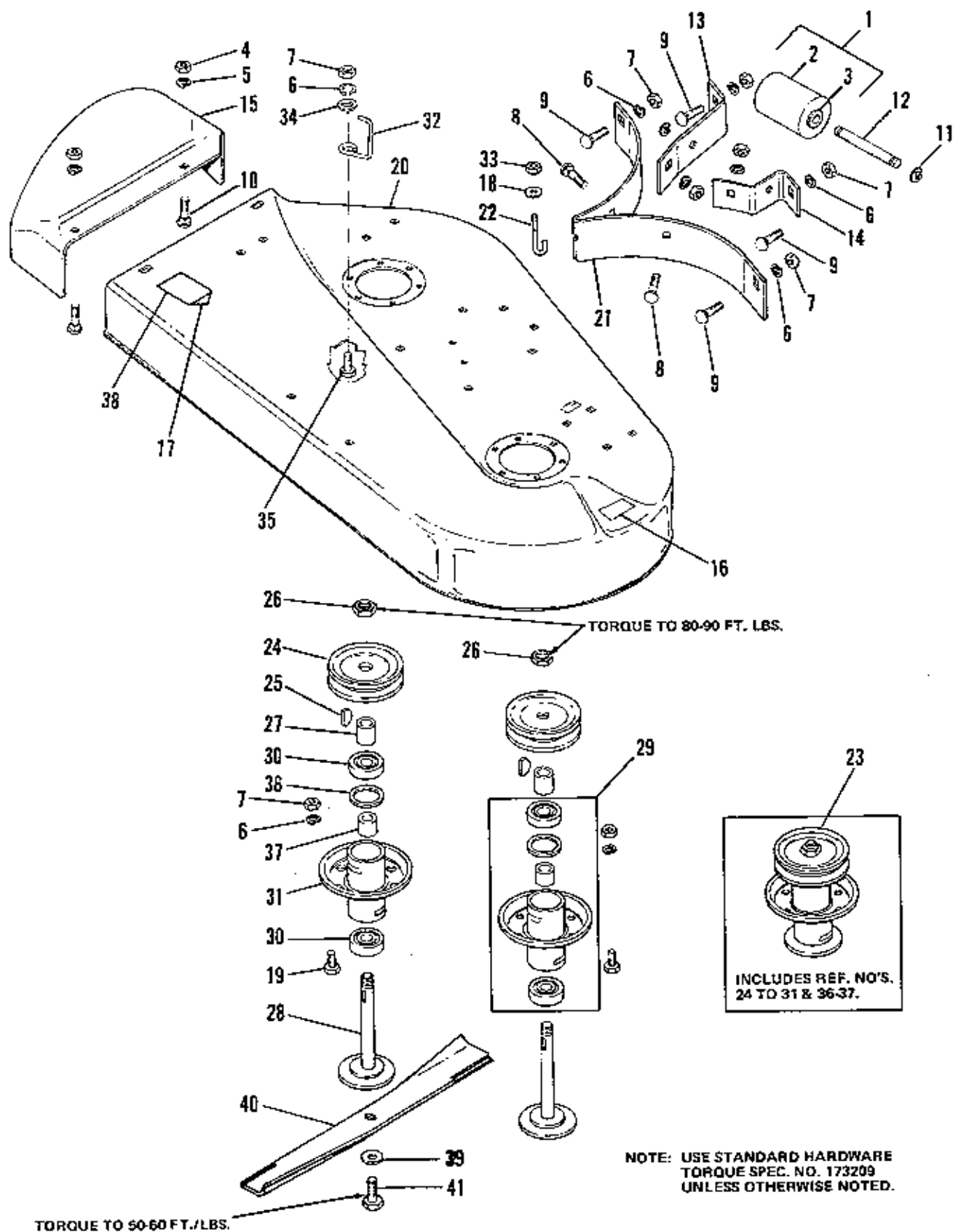
8-76

| Ref. No. | Part No. | Qty. | Serial No. | Description |
|----------|----------|------|-------------|--------------------------------------|
| 1 | 154372 | 2 | (00000)-() | CLAMP, Hose |
| 2 | 173335 | 2 | (00000)-() | PAD, Fuel Tank |
| 3 | 916965 | 2 | (00000)-() | LOCKWASHER, Spring, 3/8 |
| 4 | 917356 | 2 | (00000)-() | LOCKWASHER, Spring, 5/16 |
| 5 | 917372 | 2 | (00000)-() | NUT, Hex, 5/16-18 |
| 6 | 917377 | 10 | (00000)-() | WASHER, Plain, 1/4 |
| 7 | 921210 | 2 | (00000)-() | CAPSCREW, Hex Hd., 3/8-16 x 1 |
| 8 | 921961 | 2 | (00000)-() | CAPSCREW, Hex Hd., 1/4-20 x 1-1/4 |
| 9 | 923358 | 2 | (00000)-() | LOCKNUT, Hex, 1/4-20 |
| 10 | 931917 | 2 | (00000)-() | SCREW, Tapite Phillips, 1/4-20 x 3/4 |
| 11 | 929783 | 4 | (00000)-() | SCREW, Tapite Hex, 1/4-20 x 1 |
| 12 | 931704 | 6 | (00000)-() | LOCKWASHER, Dish, 1/4 |
| 13 | 1654805 | 1 | (00000)-() | DASHBOARD, Bottom |
| 14 | 1655313 | 1 | (00000)-() | HOSE, Fuel |
| 15 | 1656792 | 2 | (00000)-() | BOLT, Shoulder, 5/16-18 |
| 16 | 1656794 | 1 | (00000)-() | BRACE ASSY, Dash |
| 17 | 1656870 | 1 | (00000)-() | DECAL, Shift Pattern |
| 18 | 1657110 | 1 | (00000)-() | DECAL, Hood, R.H. |
| 19 | 1657111 | 1 | (00000)-() | DECAL, Hood L.H. |
| 20 | 1657120 | 2 | (00000)-() | DECAL, 6008 (6008) |
| 21 | 1657121 | 2 | (00000)-() | DECAL, 6010 (6010) |
| 22 | 1603189 | 1 | (00000)-() | AMMETER |
| 23 | 122184 | 1 | (00000)-() | SWITCH, Toggle |
| 24 | 171252 | 1 | (00000)-() | CAP, Fuel Tank |
| 25 | 1655598 | 1 | (00000)-() | IGNITION, Switch |
| 26 | 122203 | 1 | (00000)-() | KEY (2 on 1 ring) |
| 27 | 122234 | 1 | (00000)-() | NUT, Hex, 5/8-32 |
| 28 | 918906 | 1 | (00000)-() | LOCKWASHER, Internal, 5/8 |
| 29 | | 1 | (00000)-() | SWITCH |
| 30 | 1657045 | 1 | (00000)-() | WIRE |
| 31 | 1656037 | 2 | (00000)-() | LIGHT, Indicator |
| 32 | 1656071 | 1 | (00000)-() | WIRE ASSY, Headlights |
| 33 | 1656648 | 1 | (00000)-() | WIRE |
| 34 | 1656729 | 1 | (00000)-() | HARNES, Upper |
| 35 | 1656795 | 1 | (00000)-() | DASH, Top |
| 36 | 1656865 | 1 | (00000)-() | DECAL, Dash, L.H. |
| 37 | 1656869 | 1 | (00000)-() | DECAL, Dash, R.H. |
| 38 | 1652933 | 1 | (00000)-() | TANK, Fuel |
| 39 | 1655502 | 1 | (00000)-() | FUEL TANK ASSY |
| 40 | 1654929 | 1 | (00000)-() | ELBOW |
| 41 | 1654930 | 1 | (00000)-() | BUSHING |
| 42 | 916622 | 4 | (00000)-() | NUT, Hex, 1/4-20 |
| 43 | 916964 | 10 | (00000)-() | LOCKWASHER, Spring, 1/4 |
| 44 | 921958 | 10 | (00000)-() | CAPSCREW, Hex Hd., 1/4-20 x 1/2 |
| 45 | 1656774 | 1 | (00000)-() | HOOD |
| 46 | 1656786 | 1 | (00000)-() | PANEL ASSY, R.H. |
| 47 | 1656787 | 1 | (00000)-() | PANEL ASSY, L.H. |
| 48 | 172742 | 4 | (00000)-() | WASHER |
| 49 | 931888 | 10 | (00000)-() | SCREW, Plastite No. 10-14 x 1/2 |
| 50 | 1656777 | 1 | (00000)-() | GRILLE |
| 51 | 1656793 | 1 | (00000)-() | SCREEN, Grille |
| 52 | 1656935 | 2 | (00000)-() | LIGHT ASSY |
| 53 | 1654662 | 4 | (00000)-() | GASKET, Lens |
| 54 | 1654664 | 2 | (00000)-() | REFLECTOR ASSY |
| 55 | 1656933 | 2 | (00000)-() | LENS, Clear Plastic |
| 56 | | 2 | (00000)-() | BULB, No. 1293 |
| 57 | 924356 | 2 | (00000)-() | WASHER, Plain |
| 58 | 916950 | 2 | (00000)-() | NUT, Hex, 3/8-16 |
| 59 | 164120 | 2 | (00000)-() | PAD, Felt |
| 60 | 1657449 | 2 | (00000)-() | LENS, Light Indicator |



Seat Deck & Seat Group (6008 & 6010)

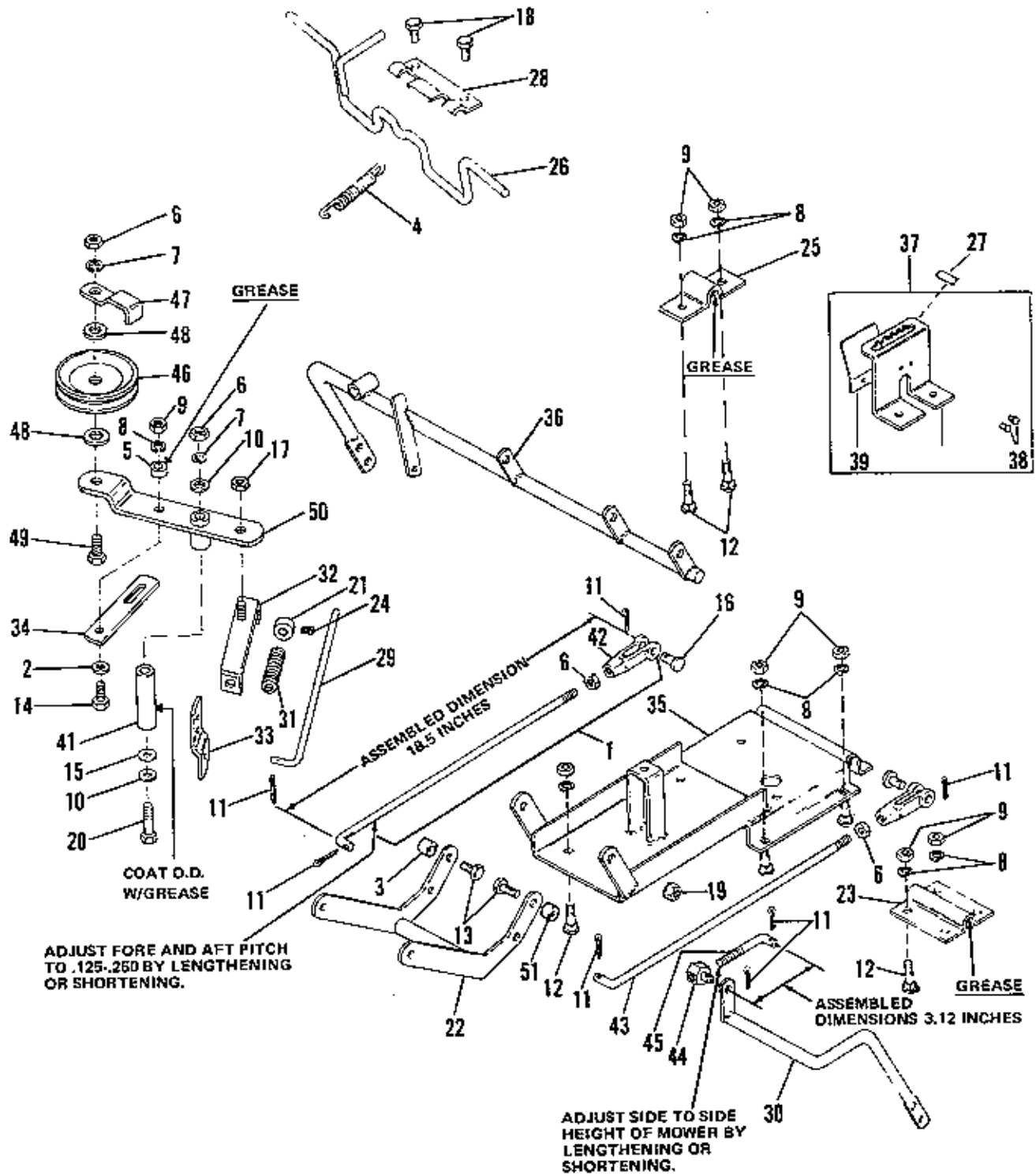
| Ref. No. | Part No. | Qty. | Serial No. | Description |
|----------|----------|------|-------------|--------------------------------------|
| 1 | 923362 | 2 | {00000}-[] | LOCKNUT, Hex, 5/16-18 |
| 2 | 930918 | 4 | {00000}-[] | SCREW, Hex, Washer Hd., 1/4-20 x 1/2 |
| 3 | 1655311 | 1 | {00000}-[] | PANEL, Shift |
| 4 | 153166 | 1 | {00000}-[] | DECAL, Simplicity |
| 5 | 917356 | 6 | {00000}-[] | LOCKWASHER, Spring 5/16 |
| 6 | 917372 | 4 | {00000}-[] | NUT, Hex 5/16-18 |
| 7 | 917642 | 7 | {00000}-[] | WASHER, Plain 5/16 |
| 8 | 921332 | 8 | {00000}-[] | CAPSCREW, Hex Hd., 5/16-18 x 3/4 |
| 9 | 1654708 | 1 | {00000}-[] | SUPPORT, Rh, Seat |
| 10 | 1654709 | 1 | {00000}-[] | SUPPORT, Lh, Seat |
| 11 | 1655281 | 2 | {00000}-[] | SPACER |
| 12 | 1655282 | 2 | {00000}-[] | SCREW, Hand |
| 13 | 1655287 | 1 | {00000}-[] | LATCH, Spring |
| 14 | 1655302 | 1 | {00000}-[] | SEAT |
| 15 | 1656765 | 1 | {00000}-[] | DECK, Seat |
| 16 | 1657131 | 2 | {00000}-[] | DECAL, Seat Deck |



36" Mower Deck & Arbor Group

8-76

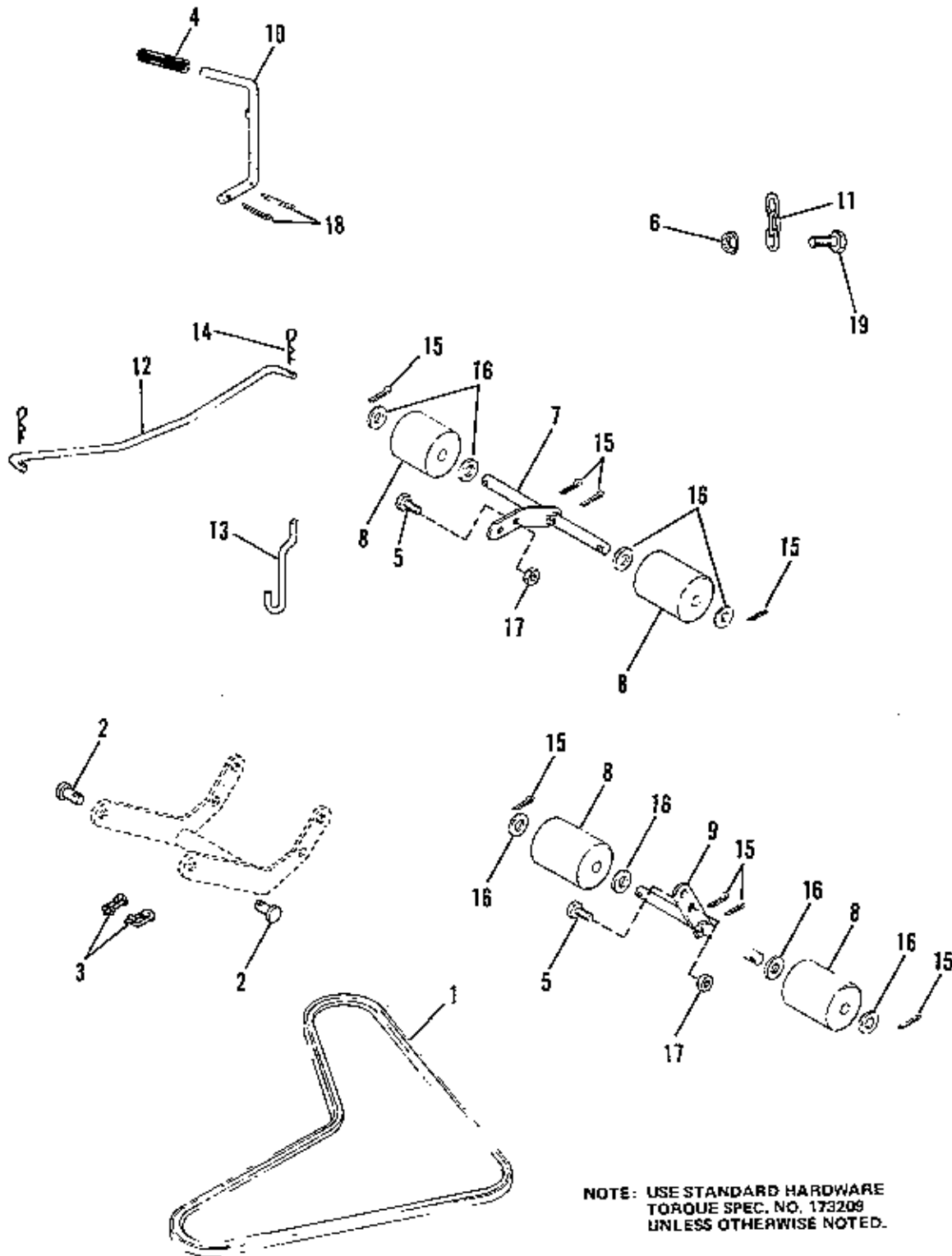
| Ref. No. | Part No. | Qty. | Serial No. | Description |
|----------|----------|------|------------|---|
| 1 | 108431 | 1 | {00000}-{ | ROLLER, w/Bushings |
| 2 | | 1 | {00000}-{ | ROLLER |
| 3 | 108419 | 2 | {00000}-{ | BUSHING |
| 4 | 916950 | 2 | {00000}-{ | NUT, Hex, 3/8-16 |
| 5 | 916965 | 2 | {00000}-{ | LOCKWASHER, 3/8 |
| 6 | 917356 | 12 | {00000}-{ | LOCKWASHER, 5/16 |
| 7 | 917372 | 12 | {00000}-{ | NUT, Hex, 5/16-18 |
| 8 | 920561 | 2 | {00000}-{ | BOLT, Carriage, Sht Nk., 5/16-18 x 5/8 |
| 9 | 920562 | 4 | {00000}-{ | BOLT, Carriage, Sht. Nk., 5/16-18 x 3/4 |
| 10 | 922110 | 2 | {00000}-{ | BOLT, Carriage, Sht Nk., 3/8-16 x 3/4 |
| 11 | 1602155 | 2 | {00000}-{ | RING, E |
| 12 | 1602205 | 1 | {00000}-{ | SHAFT, Center Roller |
| 13 | 1655096 | 1 | {00000}-{ | BRACKET, Roller, R.H. |
| 14 | 1655100 | 1 | {00000}-{ | BRACKET, Roller, L.H. |
| 15 | 1655422 | 1 | {00000}-{ | DEFLECTOR, Mower |
| 16 | 1656856 | 1 | {00000}-{ | DECAL, Danger |
| 17 | | 1 | {00000}-{ | DECAL, OPEI |
| 18 | 917377 | 1 | {00000}-{ | WASHER, Plain, 1/4 |
| 19 | 921332 | 5 | {00000}-{ | CAPSCREW, Hex Hd., 5/16-18 x 3/4 |
| 20 | 1653845 | 1 | {00000}-{ | HOUSING, 36" Mower |
| 21 | 1654551 | 1 | {00000}-{ | BAFFLE |
| 22 | 1654910 | 1 | {00000}-{ | SCREW, Baffle Hook |
| 23 | 1655550 | 2 | {00000}-{ | ARBOR & TUBE ASSY |
| 24 | 106057 | 2 | {00000}-{ | PULLEY |
| 25 | 918312 | 2 | {00000}-{ | KEY, Woodruff No. 61 |
| 26 | 922133 | 2 | {00000}-{ | LOCKNUT, Hex, 3/4-16 |
| 27 | 1653481 | 2 | {00000}-{ | SPACER |
| 28 | 1655983 | 2 | {00000}-{ | ARBOR ASSY |
| 29 | 1658039 | 2 | {00000}-{ | TUBE & BEARING ASSY |
| 30 | 108202 | 4 | {00000}-{ | BEARING, Ball |
| 31 | 1653490 | 2 | {00000}-{ | ARBOR & TUBE ASSY |
| 32 | 1657194 | 1 | {00000}-{ | STOP, Belt |
| 33 | 923358 | 1 | {00000}-{ | LOCKNUT, Hex, 1/4-20 |
| 34 | 917642 | 1 | {00000}-{ | WASHER, Plain, 5/16 |
| 35 | 921333 | 1 | {00000}-{ | CAPSCREW, Hex Hd., 5/16-18 x 1 |
| 36 | 108134 | 2 | {00000}-{ | RING, Backing |
| 37 | 108201 | 2 | {00000}-{ | SPACER |
| 38 | 1656857 | 1 | {00000}-{ | DECAL, Warning |
| 39 | 1654565 | 2 | {00000}-{ | WASHER, Spring, 35/64 |
| 40 | 1656043 | 2 | {00000}-{ | BLADE, 36" |
| 41 | 922155 | 2 | {00000}-{ | CAPSCREW, 1/2-20 x 1-1/4 |



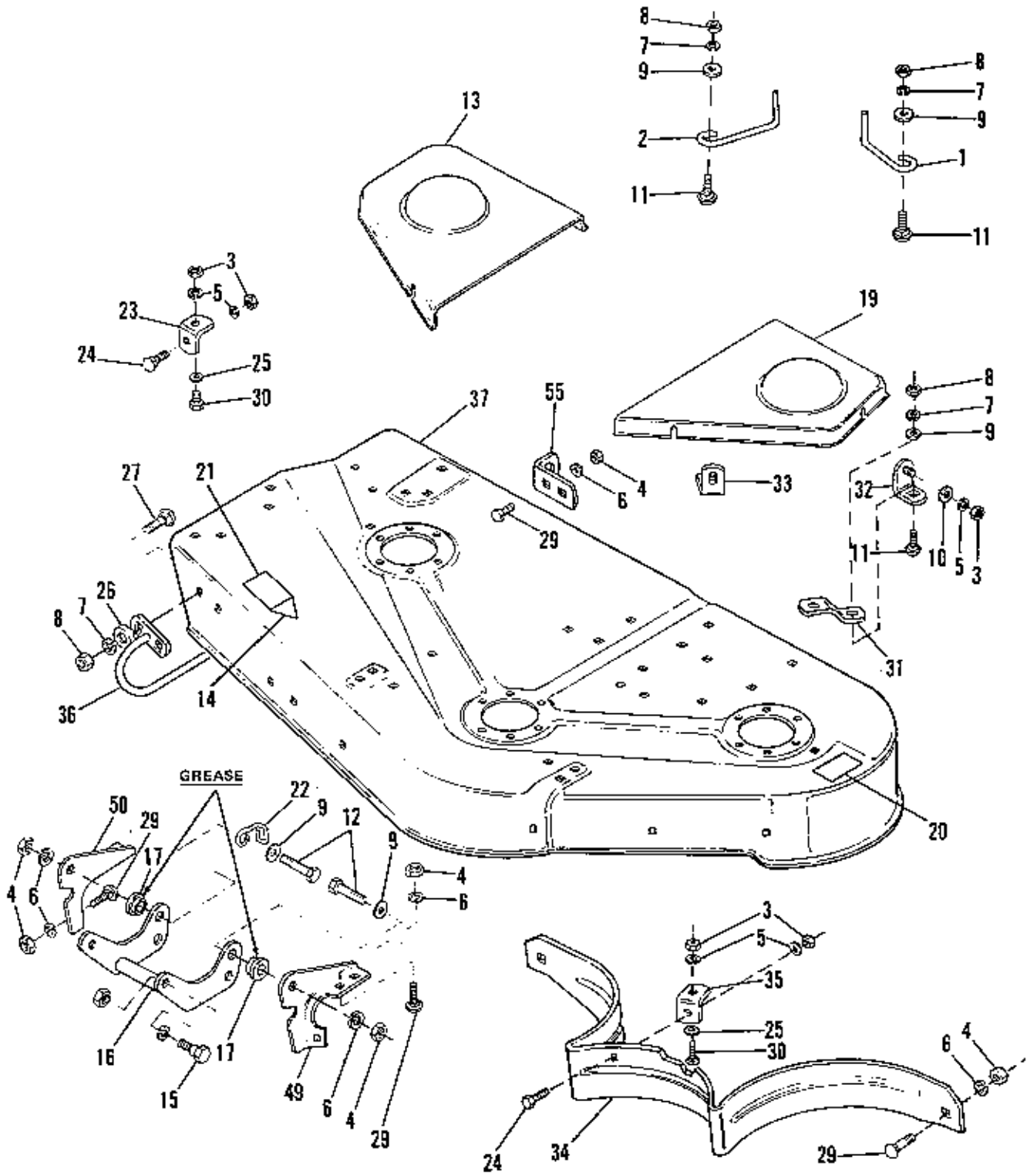
36" Clutch & Wheel Support Group

8-76

| Ref. No. | Part No. | Qty. | Serial No. | Description |
|----------|----------|------|------------|--|
| 1 | 1658040 | 1 | {00000}-{ | ROD ASSY, Height Adjusting (Includes Ref. No. 6, 42, & 43) |
| 2 | 153072 | 1 | {00000}-{ | WASHER |
| 3 | 153073 | 1 | {00000}-{ | SPACER |
| 4 | 159159 | 1 | {00000}-{ | SPRING |
| 5 | 165034 | 1 | {00000}-{ | SPACER |
| 6 | 916950 | 4 | {00000}-{ | NUT, Hex, 3/8-16 |
| 7 | 916965 | 2 | {00000}-{ | LOCKWASHER, 3/8 |
| 8 | 917356 | 15 | {00000}-{ | LOCKWASHER, 5/16 |
| 9 | 917372 | 15 | {00000}-{ | NUT, Hex, 5/16-18 |
| 10 | 917378 | 2 | {00000}-{ | WASHER, Plain, 3/8 |
| 11 | 981447 | 7 | {00000}-{ | PIN, Cotter, 3/32 x 3/4 |
| 12 | 920562 | 14 | {00000}-{ | BOLT, Carriage, Sht Nk., 5/16 x 3/4 |
| 13 | 921210 | 2 | {00000}-{ | CAPSCREW, Hex Hd., 3/8-16 x 1 |
| 14 | 921333 | 1 | {00000}-{ | CAPSCREW, Hex Hd., 5/16-18 x 1 |
| 15 | 8161199 | 1 | {00000}-{ | WASHER |
| 16 | 923087 | 2 | {00000}-{ | PIN, Yoke, 3/8 |
| 17 | 923362 | 1 | {00000}-{ | LOCKNUT, Hex, 5/16-18 |
| 18 | 927428 | 2 | {00000}-{ | SCREW, Washer Hd., Taprite, 1/4-20 x 3/8 |
| 19 | 930645 | 2 | {00000}-{ | NUT, Flange, 3/8-16 |
| 20 | 928957 | 1 | {00000}-{ | CAPSCREW, Hex Hd., 3/8-16 x 2-1/2 Gr. B |
| 21 | 8191022 | 1 | {00000}-{ | COLLAR, Set |
| 22 | 1653716 | 1 | {00000}-{ | ROCKER ARM ASSY. |
| 23 | 1653768 | 1 | {00000}-{ | CLAMP, Wheel Support |
| 24 | 928804 | 1 | {00000}-{ | SETSCREW, Sq. Hd., Cup Pt., 1/4-20 x 3/8 |
| 25 | 1654655 | 1 | {00000}-{ | STRAP |
| 26 | 1657458 | 1 | {00000}-{ | ROD ASSY, Brake |
| 27 | 1655498 | 1 | {00000}-{ | DECAL, Mower Height |
| 28 | 1655507 | 1 | {00000}-{ | SUPPORT, Brake |
| 29 | 171320 | 1 | {00000}-{ | CLUTCH ROD |
| 30 | 1656057 | 1 | {00000}-{ | SUPPORT ASSY, L.H. Roller |
| 31 | 163103 | 1 | {00000}-{ | SPRING |
| 32 | 108662 | 1 | {00000}-{ | ROD GUIDE |
| 33 | 1656991 | 1 | {00000}-{ | ARM, Pivot |
| 34 | 1656998 | 1 | {00000}-{ | LEVER, Brake |
| 35 | 1657000 | 1 | {00000}-{ | SUPPORT ASSY, Mower |
| 36 | 1657006 | 1 | {00000}-{ | SUPPORT ASSY, R.H. Roller |
| 37 | 1657019 | 1 | {00000}-{ | QUADRANT ASSY |
| 38 | 928706 | 2 | {00000}-{ | RIVET |
| 39 | 1602200 | 1 | {00000}-{ | SPRING, Mower Control |
| 40 | | 1 | {00000}-{ | QUADRANT |
| 41 | 1657242 | 1 | {00000}-{ | SPACER |
| 42 | 108157 | 2 | {00000}-{ | CLEVIS |
| 43 | 1654411 | 2 | {00000}-{ | ROD, Height Adjustment |
| 44 | 108512 | 1 | {00000}-{ | PIVOT |
| 45 | 1655811 | 1 | {00000}-{ | ROD, Bolt |
| 46 | 106716 | 1 | {00000}-{ | PULLEY, Idler |
| 47 | 106717 | 1 | {00000}-{ | BELT GUIDE |
| 48 | 917642 | 2 | {00000}-{ | WASHER, Plain, 5/16 |
| 49 | 921969 | 1 | {00000}-{ | CAPSCREW, Hex Hd., 3/8-16 x 1-1/2 |
| 50 | 1657241 | 1 | {00000}-{ | LEVER, Clutch |
| 51 | 118335 | 1 | {00000}-{ | SPACER |



| Ref. No. | Part No. | Qty. | Serial No. | Description |
|----------|----------|------|--------------|---------------------------------|
| 1 | 108505 | 1 | {00000}-(-) | V-BELT |
| 2 | 156306 | 2 | {00000}-(-) | PIN |
| 3 | 176012 | 2 | {00000}-(-) | CLIP, Safety Pin |
| 4 | 176933 | 1 | {00000}-(-) | HANDLE, Grip |
| 5 | 921210 | 4 | {00000}-(-) | CAPSCREW, Hex Hd., 3/8-16 x 1 |
| 6 | 929001 | 1 | {00000}-(-) | NUT, Flange, 3/8-16 |
| 7 | 1655097 | 1 | {00000}-(-) | SHAFT ASSY, R.H. Roller |
| 8 | 1655098 | 4 | {00000}-(-) | ROLLER |
| 9 | 1655099 | 1 | {00000}-(-) | SHAFT ASSY, L.H. Roller |
| 10 | 1656096 | 1 | {00000}-(-) | ROD, Control |
| 11 | 1656835 | 1 | {00000}-(-) | CHAIN, Lift |
| 12 | 1656999 | 1 | {00000}-(-) | ROD |
| 13 | 1657015 | 1 | {00000}-(-) | ROD, Lift |
| 14 | 108787 | 2 | {00000}-(-) | CLIP, Spring (Serviced in 5 pk) |
| 15 | 918452 | 8 | {00000}-(-) | PIN, Cotter, 1/8 x 1 |
| 16 | 919387 | 8 | {00000}-(-) | WASHER, Plain, 5/16 |
| 17 | 923428 | 4 | {00000}-(-) | LOCKNUT, Hex, 3/8-16 |
| 18 | 918448 | 2 | {00000}-(-) | PIN, Cotter, 3/32 x 1 |
| 19 | 921333 | 1 | {00000}-(-) | CAPSCREW, Hex Hd., 5/16-18 x 1 |

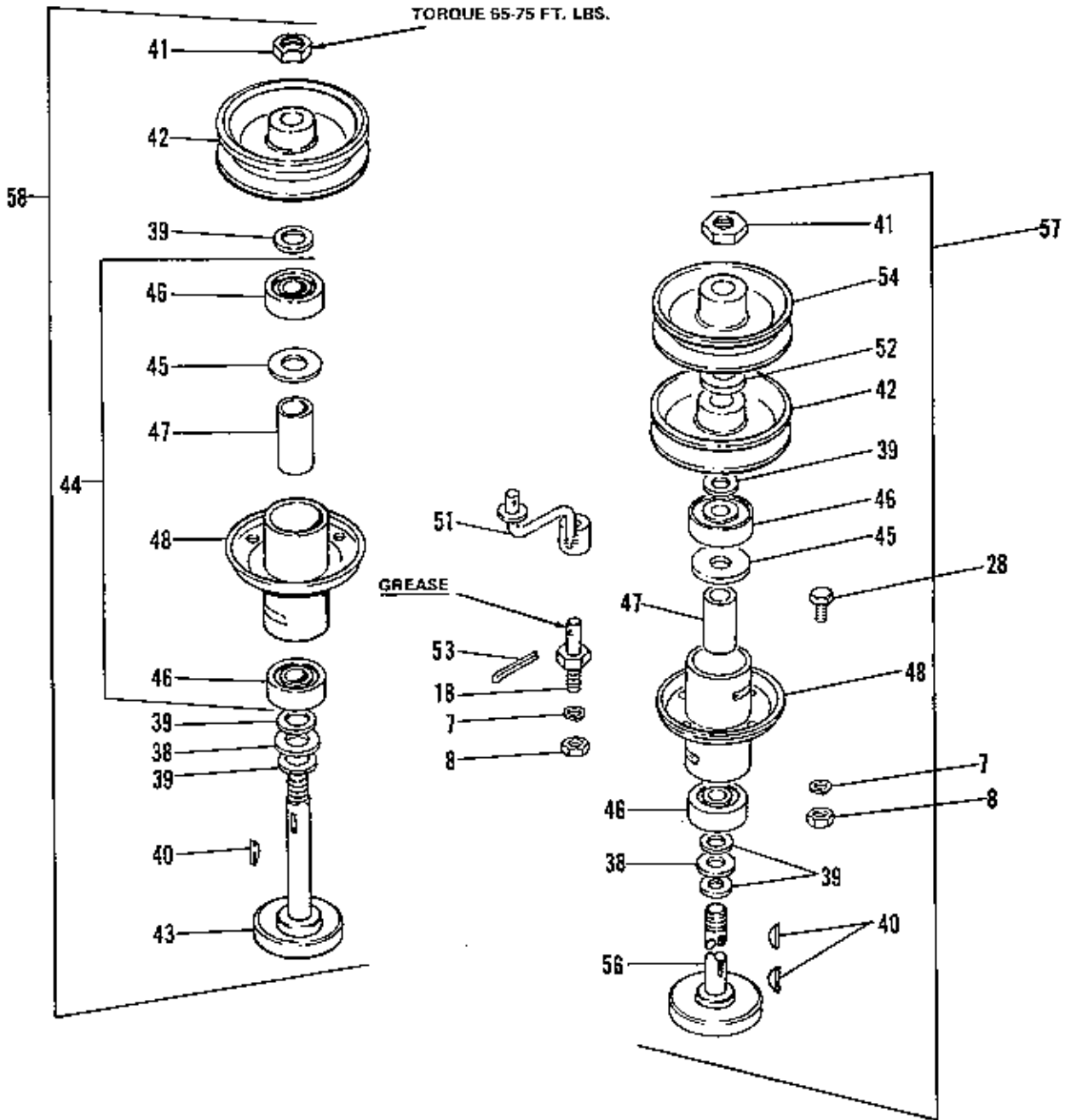


NOTE: USE STANDARD HARDWARE
TORQUE SPEC. NO. 173209 UNLESS
OTHERWISE NOTED.

42" Mower Deck & Arbor Group

8-76

| Ref. No. | Part No. | Qty. | Serial No. | Description |
|----------|----------|------|-------------|-----------------------------------|
| 1 | 106545 | 1 | (00000)-() | STOP, Bolt |
| 2 | 170395 | 1 | (00000)-() | STOP, Bolt |
| 3 | 916622 | 14 | (00000)-() | NUT, Hex, 1/4-20 |
| 4 | 916950 | 16 | (00000)-() | NUT, Hex, 3/8-16 |
| 5 | 916964 | 14 | (00000)-() | LOCKWASHER, Spring, 1/4 |
| 6 | 916965 | 16 | (00000)-() | LOCKWASHER, Spring, 3/8 |
| 7 | 917356 | 28 | (00000)-() | LOCKWASHER, Spring, 5/16 |
| 8 | 917372 | 28 | (00000)-() | NUT, Hex, 5/16-18 |
| 9 | 917642 | 10 | (00000)-() | WASHER, Plain, 5/16 |
| 10 | 918264 | 6 | (00000)-() | WASHER, Plain, 1/4 |
| 11 | 920562 | 8 | (00000)-() | BOLT, Carriage, 5/16-18 x 3/4 |
| 12 | 921969 | 2 | (00000)-() | CAPSCREW, Hex Hd., 3/8-16 x 1-1/2 |
| 13 | 1604275 | 1 | (00000)-() | COVER, R.H. Arbor |
| 14 | | 1 | (00000)-() | DECAL, OPEI |
| 15 | 108711 | 2 | (00000)-() | BOLT, Shoulder |
| 16 | 1655936 | 1 | (00000)-() | ARM ASSY, Mower Front |
| 17 | 1655939 | 2 | (00000)-() | SPACER |
| 18 | 1655992 | 1 | (00000)-() | PIN, Pivot |
| 19 | 1656800 | 1 | (00000)-() | COVER, L.H. Arbor |
| 20 | 1656856 | 1 | (00000)-() | DECAL, Danger |
| 21 | 1656957 | 1 | (00000)-() | DECAL, Warning |
| 22 | 1657018 | 1 | (00000)-() | GUIDE, Cable |
| 23 | 108186 | 2 | (00000)-() | CLIP, Ballie |
| 24 | 916943 | 4 | (00000)-() | BOLT, Carriage, 1/4-20 |
| 25 | 917377 | 4 | (00000)-() | WASHER, Plain, 1/4 |
| 26 | 919381 | 1 | (00000)-() | WASHER, Plain, 5/16 |
| 27 | 921159 | 2 | (00000)-() | BOLT, Carriage, 5/16-16 |
| 28 | 921332 | 17 | (00000)-() | CAPSCREW, Hex Hd., 5/16-18 x 3/4 |
| 29 | 922110 | 12 | (00000)-() | BOLT, Carriage, 3/8-16 x 3/4 |
| 30 | 923341 | 4 | (00000)-() | CAPSCREW, Hex Hd., 1/4-20 |
| 31 | 1603090 | 1 | (00000)-() | CLIP, Spring |
| 32 | 1604277 | 2 | (00000)-() | LEG ASSY, Arbor Cover. |
| 33 | 1604278 | 4 | (00000)-() | LEG ASSY, Arbor Cover |
| 34 | 1608135 | 1 | (00000)-() | BAFFLE, Center, 42" |
| 35 | 1608331 | 2 | (00000)-() | CLIP |
| 36 | 1608354 | 1 | (00000)-() | GUARD ASSY |
| 37 | 1608399 | 1 | (00000)-() | HOUSING, 42" Mower |
| 38 | 108257 | 3 | (00000)-() | WASHER |
| 39 | 108472 | 9 | (00000)-() | WASHER |
| 40 | 918312 | 3 | (00000)-() | KEY, Woodruff, No. 61 |
| 41 | 922133 | 3 | (00000)-() | NUT, Hex Lock, 3/4-16 |
| 42 | 1602681 | 3 | (00000)-() | PULLEY |
| 43 | 1607367 | 2 | (00000)-() | ARBOR ASSY, Side |
| 44 | 1655073 | 3 | (00000)-() | TUBE & ARBOR ASSY, w/Bearings |
| 45 | 108134 | 3 | (00000)-() | RING, Backing |
| 46 | 108202 | 6 | (00000)-() | BEARING, Ball |
| 47 | 1602265 | 3 | (00000)-() | SPACER |
| 48 | 1608664 | 3 | (00000)-() | TUBE & ARBOR ASSY |
| 49 | 1655919 | 1 | (00000)-() | BRACKET, L.H. Front |
| 50 | 1655920 | 1 | (00000)-() | BRACKET, R.H. Front |
| 51 | 1655993 | 1 | (00000)-() | BAR ASSY, Brake |
| 52 | 925084 | 1 | (00000)-() | WASHER, Plain, 3/4 |
| 53 | 918447 | 1 | (00000)-() | PIN, Cotter, 3/32 x 3/4 |
| 54 | 1655996 | 1 | (00000)-() | PULLEY, Drive |
| 55 | 1603264 | 2 | (00000)-() | BRACKET, Roller Support |
| 56 | 1607366 | 1 | (00000)-() | ARBOR, Center |
| 57 | 1685085 | 1 | (00000)-() | ARBOR KIT, Center |
| 58 | 1685064 | 1 | (00000)-() | ARBOR KIT, Outside |

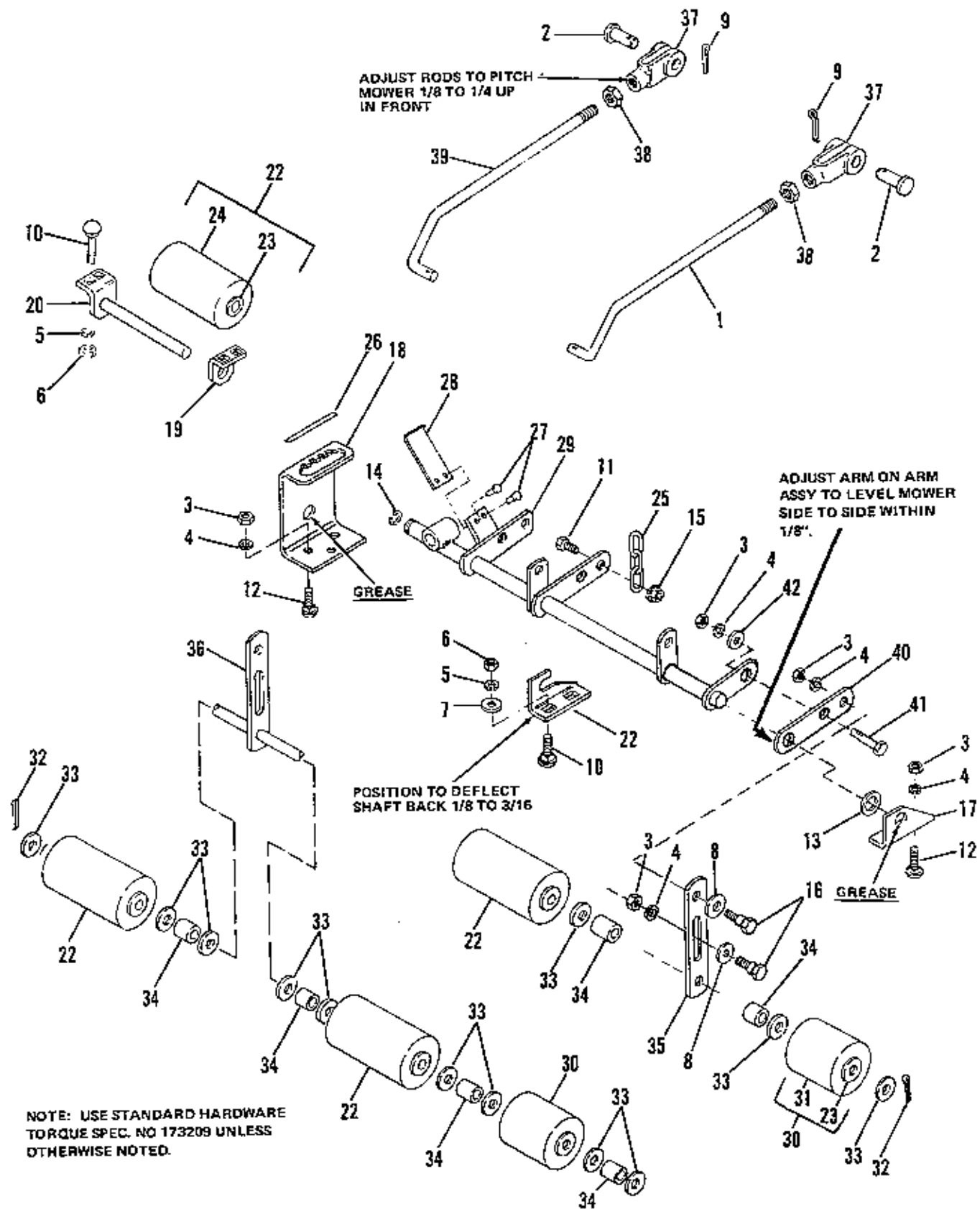


NOTE: USE STANDARD HARDWARE
TORQUE SPEC. NO. 173209 UNLESS
OTHERWISE NOTED.

42" Mower Deck & Arbor Group

8-76

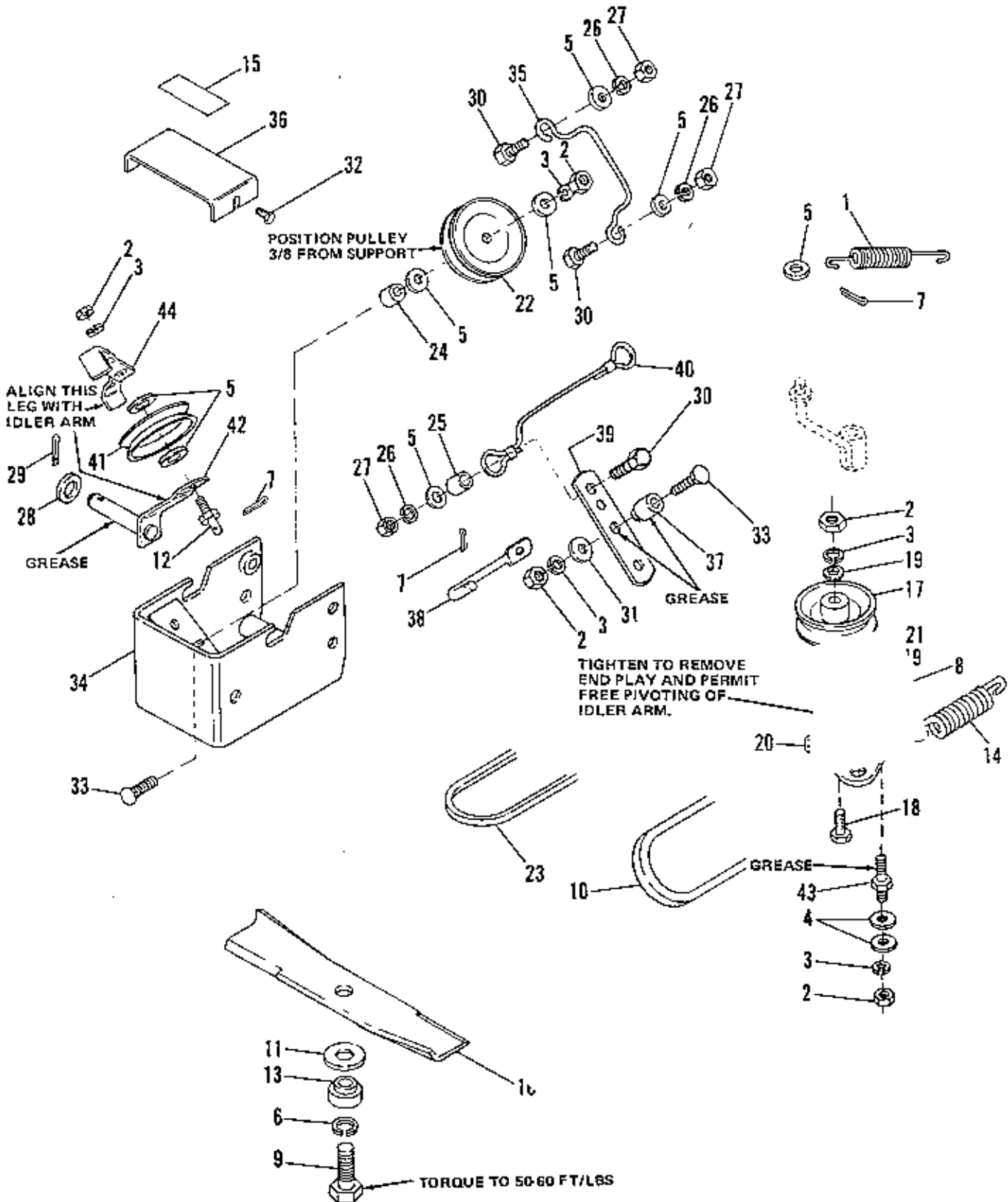
| Ref. No. | Part No. | Qty. | Serial No. | Description |
|----------|----------|------|-------------|-----------------------------------|
| 1 | 106545 | 1 | {00000}-{ } | STOP, Belt |
| 2 | 170396 | 1 | {00000}-{ } | STOP, Belt |
| 3 | 916622 | 14 | {00000}-{ } | NUT, Hex, 1/4-20 |
| 4 | 916950 | 16 | {00000}-{ } | NUT, Hex, 3/8-16 |
| 5 | 916964 | 14 | {00000}-{ } | LOCKWASHER, Spring, 1/4 |
| 6 | 916965 | 16 | {00000}-{ } | LOCKWASHER, Spring, 3/8 |
| 7 | 917356 | 28 | {00000}-{ } | LOCKWASHER, Spring, 5/16 |
| 8 | 917372 | 28 | {00000}-{ } | NUT, Hex, 5/16-18 |
| 9 | 917642 | 10 | {00000}-{ } | WASHER, Plain, 5/16 |
| 10 | 918264 | 6 | {00000}-{ } | WASHER, Plain, 1/4 |
| 11 | 920562 | 8 | {00000}-{ } | BOLT, Carriage, 5/16-18 x 3/4 |
| 12 | 921969 | 2 | {00000}-{ } | CAPSCREW, Hex Hd., 3/8-16 x 1-1/2 |
| 13 | 1604275 | 1 | {00000}-{ } | COVER, R.H. Arbor |
| 14 | | 1 | {00000}-{ } | DECAL, OPEI |
| 15 | 108711 | 2 | {00000}-{ } | BOLT, Shoulder |
| 16 | 1655936 | 1 | {00000}-{ } | ARM ASSY, Mower Front |
| 17 | 1655939 | 2 | {00000}-{ } | SPACER |
| 18 | 1655992 | 1 | {00000}-{ } | PIN, Pivot |
| 19 | 1656800 | 1 | {00000}-{ } | COVER, L.H. Arbor |
| 20 | 1656856 | 1 | {00000}-{ } | DECAL, Danger |
| 21 | 1656857 | 1 | {00000}-{ } | DECAL, Warning |
| 22 | 1657018 | 1 | {00000}-{ } | GUIDE, Cable |
| 23 | 108186 | 2 | {00000}-{ } | CLIP, Baffle |
| 24 | 916943 | 4 | {00000}-{ } | BOLT, Carriage, 1/4-20 |
| 25 | 917377 | 4 | {00000}-{ } | WASHER, Plain, 1/4 |
| 26 | 919381 | 1 | {00000}-{ } | WASHER, Plain, 5/16 |
| 27 | 921158 | 2 | {00000}-{ } | BOLT, Carriage, 3/8-16 |
| 28 | 921332 | 17 | {00000}-{ } | CAPSCREW, Hex Hd., 5/16-18 x 3/4 |
| 29 | 922110 | 12 | {00000}-{ } | BOLT, Carriage, 3/8-16 x 3/4 |
| 30 | 923341 | 4 | {00000}-{ } | CAPSCREW, Hex Hd., 1/4-20 |
| 31 | 1603090 | 1 | {00000}-{ } | CLIP, Spring |
| 32 | 1604277 | 2 | {00000}-{ } | LEG ASSY, Arbor Cover |
| 33 | 1604278 | 4 | {00000}-{ } | LEG ASSY, Arbor Cover |
| 34 | 1608135 | 1 | {00000}-{ } | BAFFLE, Center, 42" |
| 35 | 1608331 | 2 | {00000}-{ } | CLIP |
| 36 | 1608354 | 1 | {00000}-{ } | GUARD ASSY |
| 37 | 1608399 | 1 | {00000}-{ } | HOUSING, 42" Mower |
| 38 | 108257 | 3 | {00000}-{ } | WASHER |
| 39 | 108472 | 9 | {00000}-{ } | WASHER |
| 40 | 918312 | 3 | {00000}-{ } | KEY, Woodruff, No. 61 |
| 41 | 922133 | 3 | {00000}-{ } | NUT, Hex Lock, 3/4-16 |
| 42 | 1602881 | 3 | {00000}-{ } | PULLEY |
| 43 | 1607367 | 2 | {00000}-{ } | ARBOR ASSY, Side |
| 44 | 1655073 | 3 | {00000}-{ } | TUBE & ARBOR ASSY, w/Bearings |
| 45 | 108134 | 3 | {00000}-{ } | RING, Backing |
| 46 | 108202 | 6 | {00000}-{ } | BEARING, Ball |
| 47 | 1602265 | 3 | {00000}-{ } | SPACER |
| 48 | 1608664 | 3 | {00000}-{ } | TUBE & ARBOR ASSY |
| 49 | 1655919 | 1 | {00000}-{ } | BRACKET, L.H. Front |
| 50 | 1655920 | 1 | {00000}-{ } | BRACKET, R.H. Front |
| 51 | 1655993 | 1 | {00000}-{ } | BAR ASSY, Brake |
| 52 | 925084 | 1 | {00000}-{ } | WASHER, Plain, 3/4 |
| 53 | 916447 | 1 | {00000}-{ } | PIN, Cotter, 3/32 x 3/4 |
| 54 | 1655996 | 1 | {00000}-{ } | PULLEY, Drive |
| 55 | 1603264 | 2 | {00000}-{ } | BRACKET, Roller Support |
| 56 | 1607366 | 1 | {00000}-{ } | ARBOR, Center |
| 57 | 1685065 | 1 | {00000}-{ } | ARBOR KIT, Center |
| 58 | 1685064 | 1 | {00000}-{ } | ARBOR KIT, Outside |



42" Height Adjustment & Roller Group

8-76

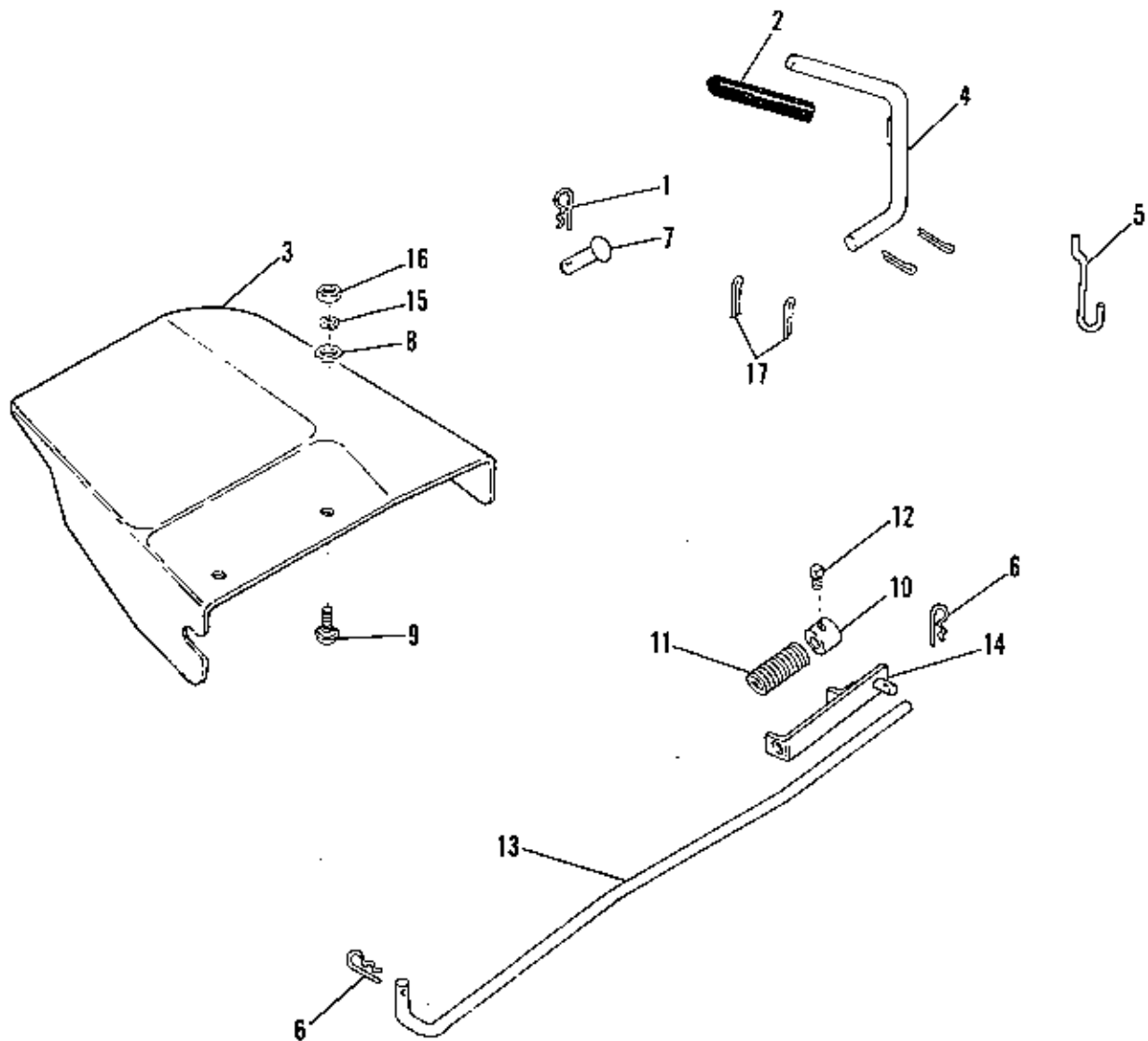
| Ref. No. | Part No. | Qty. | Serial No. | Description |
|----------|----------|------|-------------|-------------------------------|
| 1 | 1655929 | 1 | {00000}-{ } | ROD, L.H., Mower Adjusting |
| 2 | 154305 | 2 | {00000}-{ } | PIN, Yoke |
| 3 | 916950 | 10 | {00000}-{ } | NUT, Hex, 3/8-16 |
| 4 | 916985 | 10 | {00000}-{ } | LOCKWASHER, Spring, 3/8 |
| 5 | 917356 | 6 | {00000}-{ } | LOCKWASHER, Spring, 5/16 |
| 6 | 917372 | 6 | {00000}-{ } | NUT, Hex, 5/16-18 |
| 7 | 917642 | 2 | {00000}-{ } | WASHER, Plain, 5/16 |
| 8 | 918430 | 4 | {00000}-{ } | WASHER, Plain, 7/16 |
| 9 | 918452 | 2 | {00000}-{ } | PIN, Cotter, 1/8 x 1 |
| 10 | 920562 | 6 | {00000}-{ } | BOLT, Carriage, 5/16-18 x 3/4 |
| 11 | 921210 | 1 | {00000}-{ } | CAPSCREW, Hex Hd., 3/8-16 |
| 12 | 922110 | 5 | {00000}-{ } | BOLT, Carriage, 3/8-16 x 3/4 |
| 13 | 924368 | 1 | {00000}-{ } | WASHER, Plain, 3/4 |
| 14 | 927794 | 1 | {00000}-{ } | RING, Retaining No. 75, 3/4 |
| 15 | 930645 | 1 | {00000}-{ } | NUT, Flange, 3/4-16 |
| 16 | 1602186 | 4 | {00000}-{ } | BOLT, Shoulder |
| 17 | 1603259 | 1 | {00000}-{ } | BRACKET, Pivot, L.H. |
| 18 | 1603260 | 1 | {00000}-{ } | QUADRANT, Mower Control |
| 19 | 1603269 | 1 | {00000}-{ } | BRACKET, Center Support |
| 20 | 1603309 | 1 | {00000}-{ } | SHAFT ASSY, Center Roller |
| 21 | 1608118 | 1 | {00000}-{ } | BRACKET, Lift |
| 22 | 1608398 | 4 | {00000}-{ } | ROLLER ASSY |
| 23 | 106419 | 12 | {00000}-{ } | BUSHING |
| 24 | | 4 | {00000}-{ } | ROLLER, Mower |
| 25 | 1656835 | 1 | {00000}-{ } | CHAIN, Lift |
| 26 | 1656855 | 1 | {00000}-{ } | DECAL, Mower Height |
| 27 | 924280 | 2 | {00000}-{ } | RIVET, Pop |
| 28 | 1603262 | 1 | {00000}-{ } | SPRING, Mower Quad |
| 29 | 1657508 | 1 | {00000}-{ } | ARM ASSY, Mower |
| 30 | 106431 | 2 | {00000}-{ } | ROLLER SUB-ASSY |
| 31 | | 2 | {00000}-{ } | ROLLER |
| 32 | 918458 | 2 | {00000}-{ } | PIN, Cotter, 3/16 x 1 |
| 33 | 919387 | 11 | {00000}-{ } | WASHER, Plain, 5/8 |
| 34 | 1602946 | 6 | {00000}-{ } | SPACER, Roller |
| 35 | 1603263 | 1 | {00000}-{ } | BAR, Roller |
| 36 | 1657405 | 1 | {00000}-{ } | SHAFT ASSY, Roller |
| 37 | 157631 | 2 | {00000}-{ } | YOKE, End Adj. |
| 38 | 919262 | 2 | {00000}-{ } | NUT, Hex Jam, 1/2-20 |
| 39 | 1655930 | 1 | {00000}-{ } | ROD, R.H. Mower Adjusting |
| 40 | 1657507 | 1 | {00000}-{ } | ARM, Mower |
| 41 | 920415 | 1 | {00000}-{ } | CAPSCREW, 3/8-16 x 1-1/4 |



NOTE: USE STANDARD HARDWARE
TORQUE SPEC. NO 173209 UNLESS
OTHERWISE NOTED.

42" Drive Group




| Ref. No. | Part No. | Qty. | Serial No. | Description |
|----------|----------|------|------------|---------------------------------------|
| 1 | 159181 | 1 | {00000}-{ | SPRING |
| 2 | 916950 | 5 | {00000}-{ | NUT, Hex, 3/8-16 |
| 3 | 916955 | 5 | {00000}-{ | LOCKWASHER, Spring, 3/8 |
| 4 | 917378 | 2 | {00000}-{ | WASHER, Plain, 3/8 |
| 5 | 917642 | 8 | {00000}-{ | WASHER, Plain, 5/16 |
| 6 | 918199 | 3 | {00000}-{ | LOCKWASHER, Spring, 7/16 |
| 7 | 918447 | 3 | {00000}-{ | PIN, Cotter, 3/32 x 3/4 |
| 8 | 923428 | 1 | {00000}-{ | NUT, Hex, Full Lock, 3/8-16 |
| 9 | 928066 | 3 | {00000}-{ | CAPSCREW, Hex Hd., 7/16-20 |
| 10 | 108209 | 1 | {00000}-{ | V-BELT, Arbor Drive |
| 11 | 1603592 | 3 | {00000}-{ | WASHER, Belleville |
| 12 | 1655948 | 1 | {00000}-{ | STUD |
| 13 | 1607535 | 3 | {00000}-{ | WASHER, Shoulder |
| 14 | 1608395 | 1 | {00000}-{ | SPRING |
| 15 | 1657230 | 1 | {00000}-{ | DECAL, Caution |
| 16 | 1656048 | 3 | {00000}-{ | BLADE, 42" Mower |
| 17 | 164268 | 1 | {00000}-{ | PULLEY, Idler |
| 18 | 921971 | 1 | {00000}-{ | CAPSCREW, Hex Hd., 3/8-16 x 1-3/4 |
| 19 | 924940 | 2 | {00000}-{ | WASHER, Plain, 3/8 |
| 20 | 1603088 | 1 | {00000}-{ | LEVER ASSY, Idler |
| 21 | 1610404 | 1 | {00000}-{ | SPACER |
| 22 | 101086 | 1 | {00000}-{ | PULLEY |
| 23 | 108508 | 1 | {00000}-{ | V-BELT |
| 24 | 154177 | 1 | {00000}-{ | SPACER |
| 25 | 156150 | 1 | {00000}-{ | SPACER |
| 26 | 917356 | 3 | {00000}-{ | LOCKWASHER, Spring, 5/16 |
| 27 | 917372 | 3 | {00000}-{ | NUT, Hex, 5/16-18 |
| 28 | 918430 | 1 | {00000}-{ | WASHER, Plain, 7/16 |
| 29 | 918448 | 1 | {00000}-{ | PIN, Cotter, 3/32 x 1 |
| 30 | 921333 | 3 | {00000}-{ | CAPSCREW, Hex Hd., 5/16-18 x 1 |
| 31 | 922755 | 1 | {00000}-{ | WASHER, Plain, 3/8 |
| 32 | 927428 | 2 | {00000}-{ | SCREW, Hex Hd., Taprite, 1/4-20 x 3/8 |
| 33 | 931352 | 2 | {00000}-{ | BOLT, Carnage, 3/8-16 x 1-1/2 |
| 34 | 1655931 | 1 | {00000}-{ | SUPPORT ASSY, Mower |
| 35 | 1656394 | 1 | {00000}-{ | STOP, Belt |
| 36 | 1656406 | 1 | {00000}-{ | COVER, Pulley |
| 37 | 1656752 | 1 | {00000}-{ | SPACER |
| 38 | 1656759 | 1 | {00000}-{ | ROD, Clutch |
| 39 | 1656764 | 1 | {00000}-{ | BELLCRANK |
| 40 | 1656771 | 1 | {00000}-{ | CABLE ASSY, Brake |
| 41 | 106716 | 1 | {00000}-{ | PULLEY, Idler |
| 42 | 1655940 | 1 | {00000}-{ | LEVER ASSY, Idler |
| 43 | 1604137 | 1 | {00000}-{ | STUD |
| 44 | 1658773 | 1 | {00000}-{ | GUIDE ASSY, Belt |



NOTE: USE STANDARD HARDWARE
TORQUE SPEC. NO 173209 UNLESS
OTHERWISE NOTED.

| Ref. No. | Part No. | Qty. | Serial No. | Description |
|----------|----------|------|-------------|--------------------------------------|
| 1 | 106788 | 4 | {00000}-I) | CLIP, Spring |
| 2 | 176933 | 1 | {00000}-L) | HANDLE, Grip |
| 3 | 1656049 | 1 | {00000}-[) | DEFLECTOR |
| 4 | 1656412 | 1 | {00000}-[] | LEVER, Control |
| 5 | 1657015 | 1 | {00000}-[} | ROD, Lift |
| 6 | 106787 | 2 | {00000}-{ } | CLIP, Spring |
| 7 | 156306 | 4 | {00000}-I } | PIN |
| 8 | 917378 | 2 | {00000}-I } | WASHER, Plain, 3/8 |
| 9 | 922110 | 2 | {00000}-[} | BOLT, Carriage, 3/8-16 x 3/4 |
| 10 | 106201 | 1 | {00000}-I) | COLLAR, Set |
| 11 | 163103 | 1 | {00000}-[) | SPRING |
| 12 | 928804 | 1 | {00000}-[] | SCREW, Set, Square Hd., 1/4-20 x 3/8 |
| 13 | 1656796 | 1 | {00000}-[) | ROD, PTO |
| 14 | 1656975 | 1 | {00000}-[) | ROD GUIDE ASSY |
| 15 | 916965 | 2 | {00000}-I } | LOCKWASHER, 3/8 |
| 16 | 916950 | 2 | {00000}-[] | NUT, Hex, 3/8 |
| 17 | 918452 | 4 | {00000}-[] | PIN, Cotter |

**TORQUE SPECIFICATIONS FOR
STANDARD MACHINE HARDWARE
TOLERANCE $\pm 20\%$**

| SIZE | SAE GRADE #2  | | SAE GRADE #5  | | SAE GRADE #8  | |
|---------|---|-------|---|-------|---|--------|
| | <u>In./Lbs.</u> Ft./Lbs. | Nm. | <u>In./Lbs.</u> Ft./Lbs. | Nm. | <u>In./Lbs.</u> Ft./Lbs. | Nm. |
| 8-32 | 19 | 2.1 | 30 | 3.4 | 41 | 4.6 |
| 8-36 | 20 | 2.3 | 31 | 3.5 | 43 | 4.9 |
| 10-24 | 27 | 3.1 | 43 | 4.9 | 60 | 6.8 |
| 10-32 | 31 | 3.5 | 49 | 5.5 | 68 | 7.7 |
| 1/4-20 | 66 | 7.6 | 8 | 10.9 | 12 | 16.3 |
| 1/4-28 | 76 | 8.6 | 10 | 13.6 | 14 | 19. |
| 5/16-18 | 11 | 15. | 17 | 23.1 | 25 | 34. |
| 5/16-24 | 12 | 16.3 | 19 | 25.8 | 25 | 34. |
| 3/8-16 | 20 | 27.2 | 30 | 40.8 | 45 | 61.2 |
| 3/8-24 | 23 | 31.3 | 35 | 47.6 | 50 | 68. |
| 7/16-14 | 30 | 40.8 | 50 | 68. | 70 | 95.2 |
| 7/16-20 | 35 | 47.6 | 55 | 74.8 | 80 | 108.8 |
| 1/2-13 | 50 | 68. | 75 | 102. | 110 | 149.6 |
| 1/2-20 | 55 | 74.8 | 90 | 122.4 | 120 | 163.2 |
| 9/16-12 | 65 | 88.4 | 110 | 149.6 | 150 | 204. |
| 9/16-18 | 75 | 102. | 120 | 163.2 | 170 | 231.2 |
| 5/8-11 | 90 | 122.4 | 150 | 204. | 220 | 299.2 |
| 5/8-18 | 100 | 136. | 180 | 244.8 | 240 | 326.4 |
| 3/4-10 | 160 | 217.6 | 260 | 353.6 | 386 | 525. |
| 3/4-16 | 180 | 244.8 | 300 | 408. | 420 | 571.2 |
| 7/8-9 | 140 | 190.4 | 400 | 544. | 600 | 816. |
| 7/8-14 | 155 | 210.8 | 440 | 598.4 | 660 | 897.6 |
| 1-8 | 220 | 299.2 | 580 | 788.8 | 900 | 1,224. |
| 1-12 | 240 | 326.4 | 640 | 870.4 | 1,000 | 1,360. |

NOTE:

1. These torque values are to be used for all hardware excluding: locknuts, self-tapping screws, thread forming screws, sheet metal screws and socket head setscrews.
2. Recommended seating torque values for locknuts:
 - a. For prevailing torque locknuts - use 65% of grade 5 torques.
 - b. For flange whizlock nuts (and screws) - use 135% of grade 5 torques.
3. Unless otherwise noted on assembly drawings all torque values must meet this specification.

**BOLT HEAD MARKING
S.A.E. GRADE:**



