



Illustrated Parts List

Portable Generator



This generator is rated in accordance with CSA (Canadian Standards Association) standard C22.2 No. 100-94 (motor and generators).

Questions? Help is just a moment away!
Preguntas? La ayuda es justa un momento lejos!

Call: Portable Generator Helpline
Llame: Línea Directa del Generador portátil - 1-800-732-2989 M-F 8-5 CST

Model / Modelo

Mfg. No.	Description / Descripción
030471-0	8,000 Watt Briggs & Stratton

Manual Part No. 312811

Revision E

Rev. Date: 11/30/2012

Not for
Reproduction

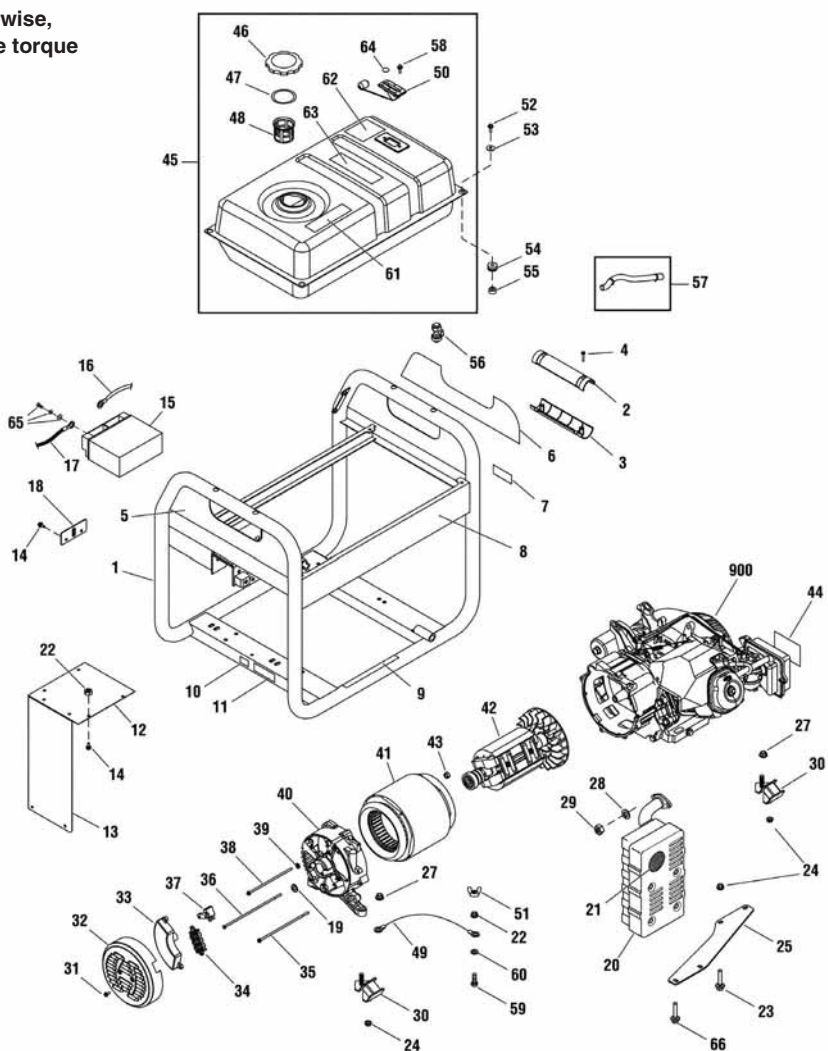
PRODUCT COMPONENTS	PAGES
Main Unit	4
Control Panel	7
Wheel Kit	8
Torque Specification Chart	Inside Back Cover

Not for
Reproduction

Main Unit

311995

NOTE: Unless noted otherwise, use the standard hardware torque specification chart.



REF. PART NO.	DESCRIPTION	REF. PART NO.	DESCRIPTION
1	312007GS CRADLE	18	311983GS PLATE, Battery
2	312008GS GRIP, Handle	19	312045GS WASHER
3	312009GS GRIP, Handle	20	192569GS MUFFLER
4	75477GS SCREW	21	83083GS SCREEN
5	313235GS DECAL	22	197861GS NUT
6	313236GS DECAL	23	311987GS SCREW
7	197798GS DECAL	24	67989GS NUT
8	313234GS DECAL	25	311985GS SUPPORT, Muffler
9	200310GS DECAL	27	193747GS NUT
10	B4986GS DECAL	28	22129GS WASHER
11	200311GS DECAL	29	45771GS NUT
12	312020GS HEATSHIELD	30	312012GS MOUNT, Vibration
13	312019GS HEATSHIELD	31	207824GS SCREW
14	209775GS BOLT	32	209428GS END COVER
15	193043GS BATTERY	33	312038GS VOLTAGE REGULATOR
16	312014GS CABLE, Battery, Red	34	312041GS TERMINAL BLOCK
17	312026GS CABLE, Battery, Black		

Footnotes

** Contact Engine Manufacturer

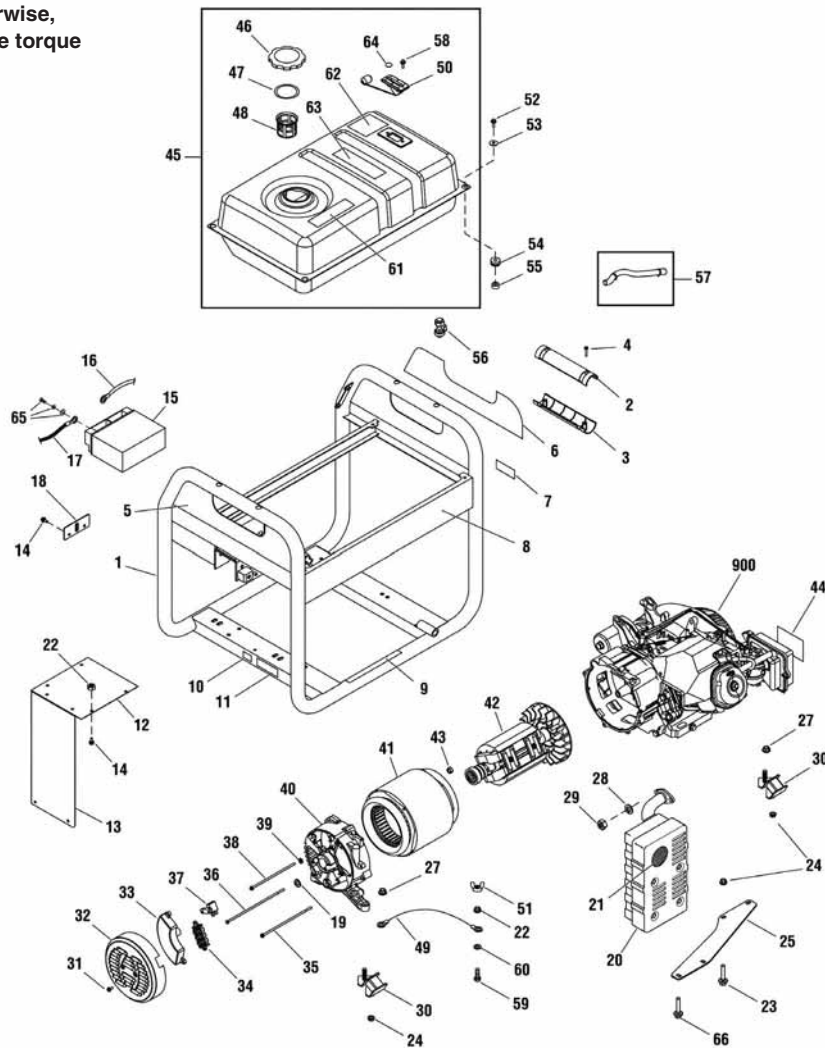
The above parts group applies to the following Mfg. Nos.:

030471-0 - 8,000 Watt Briggs & Stratton

Main Unit

311995

NOTE: Unless noted otherwise, use the standard hardware torque specification chart.



REF. PART NO.	DESCRIPTION	REF. PART NO.	DESCRIPTION
35	312638GS BOLT	52	209421GS BOLT
36	312639GS BOLT	53	312005GS WASHER
37	209441GS BRUSH ASSEMBLY	54	312006GS GROMMET
38	312640GS BOLT	55	312010GS SPACER
39	49226GS WASHER	56	209417GS VALVE, Fuel
40	207838GS CARRIER, Bearing	57	791745 KIT, Fuel Hose (Cut to Fit)
41	312032GS STATOR	58	197896GS SCREW
42	312029GS ROTOR	59	47411GS SCREW
43	207878GS NUT	60	22097GS WASHER
44	311478GS DECAL	61	188333GS DECAL
45	311988GS TANK, Fuel	62	202997GS DECAL
46	311990GS CAP, Fuel	63	194984GS DECAL
47	209939GS SEAL	64	313461GS DECAL
48	311991GS FILTER, Screen	65	315546GS KIT, Hardware, Battery Terminal
49	312040GS WIRE	66	66476GS SCREW
50	311992GS GAUGE, Fuel	900	---- ** ENGINE
51	87680GS NUT	--	310784GS MANUAL, Operator's (Not Illustrated)

Footnotes

** Contact Engine Manufacturer

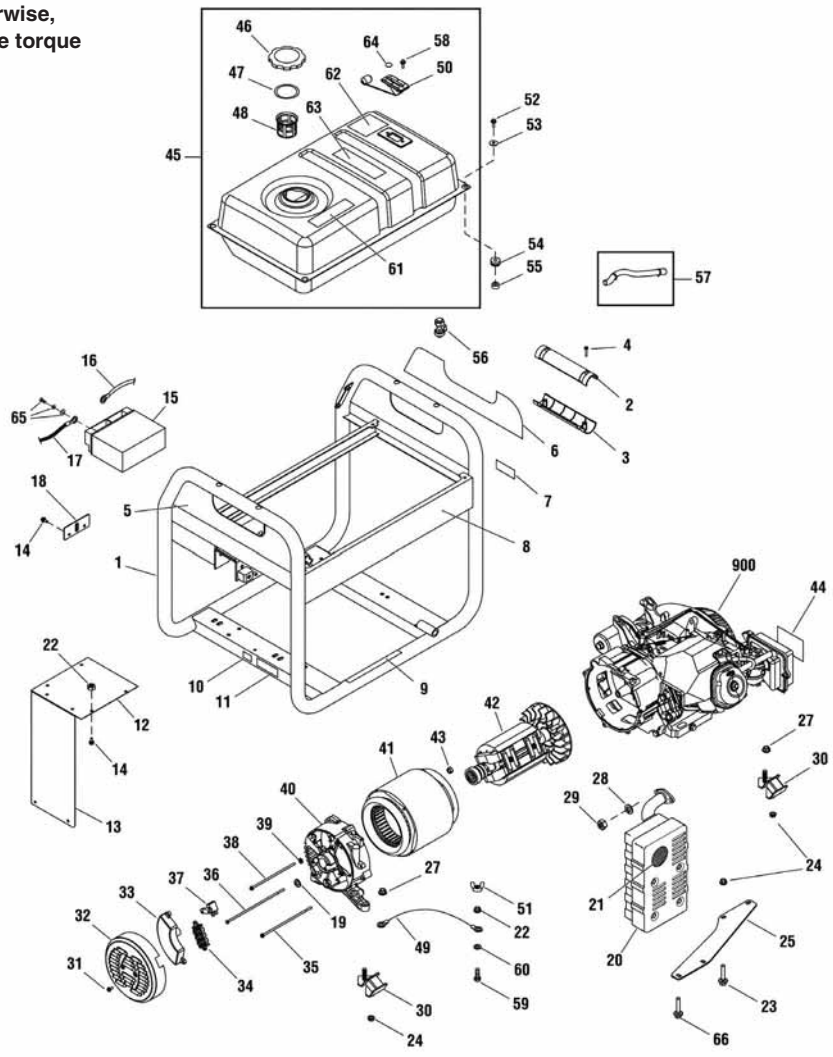
The above parts group applies to the following Mfg. Nos.:

030471-0 - 8,000 Watt Briggs & Stratton

Main Unit

311995

NOTE: Unless noted otherwise, use the standard hardware torque specification chart.



REF. PART NO.	DESCRIPTION	REF. PART NO.	DESCRIPTION
-- B4177GS	CHARGER, Battery (Not Illustrated)		
-- 316742GS	FUSE (Not Illustrated)		

Footnotes

** Contact Engine Manufacturer

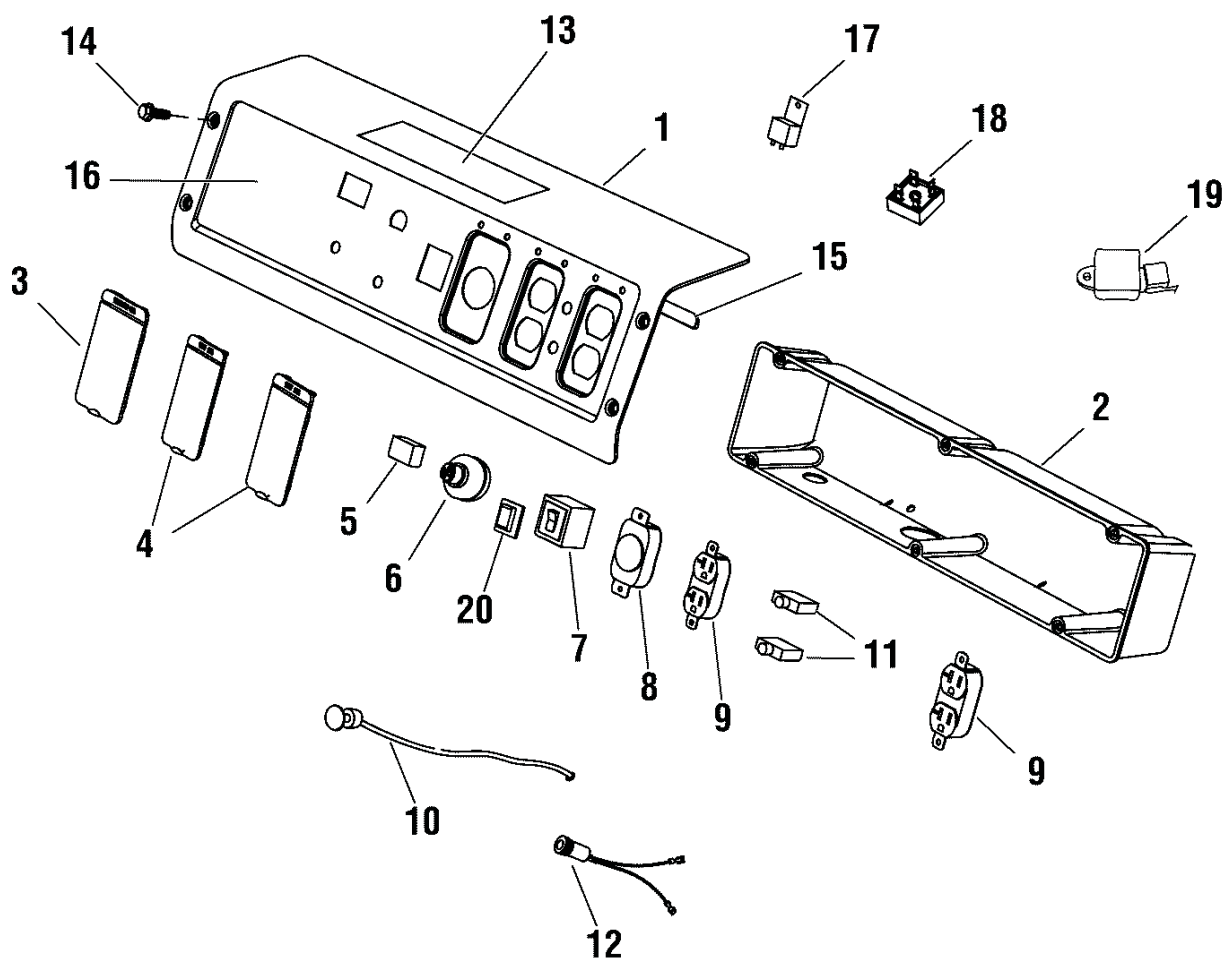
The above parts group applies to the following Mfg. Nos.:

030471-0 - 8,000 Watt Briggs & Stratton

Control Panel

311832

NOTE: Unless noted otherwise,
use the standard hardware torque
specification chart.



REF. PART NO.	DESCRIPTION	REF. PART NO.	DESCRIPTION		
1	312001GS	PANEL, Control	18	312027GS	RECTIFIER, Bridge
2	312002GS	BOX, Control Panel	19	314211GS	RECTIFIER
3	312030GS	COVER, Outlet	20	191481GS	BOOT, Circuit Breaker
4	312031GS	COVER, Outlet	--	691959	KEY (Not Illustrated)
5	198245GS	METER, Hour			
6	692318	KEY, Switch Ignition			
7	202033GS	BREAKER, Circuit, 30A			
8	43437GS	OUTLET, 120/240V TL30A			
9	68759GS	OUTLET, 120V 20A			
10	312034GS	CABLE, Choke			
11	317605GS	BREAKER, Circuit, 20A			
12	312004GS	JACK, Coaxial			
13	311565GS	DECAL			
14	209775GS	BOLT			
15	312033GS	TRIM-EDGE			
16	313233GS	DECAL			
17	312003GS	RELAY			

Footnotes

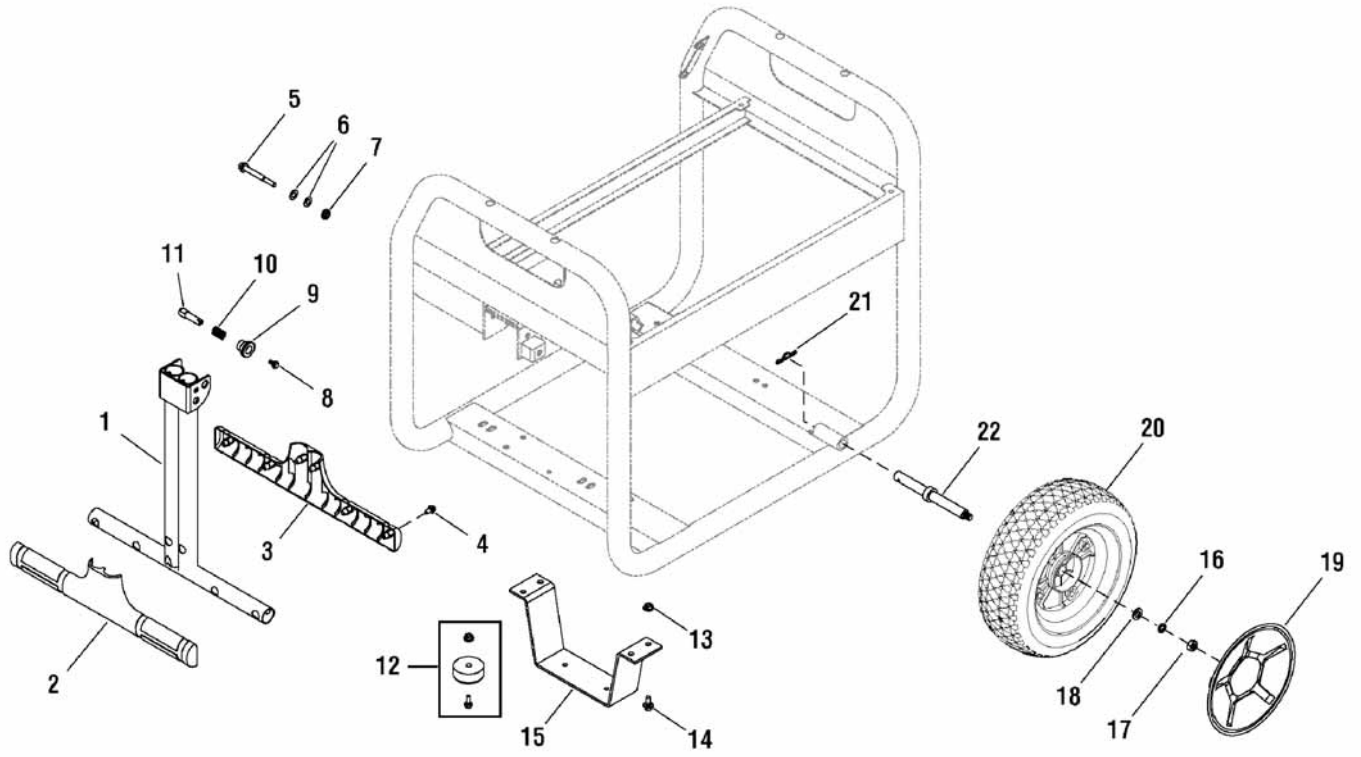
The above parts group applies to the following Mfg. Nos.:

030471-0 - 8,000 Watt Briggs & Stratton

Wheel Kit

312167

NOTE: Unless noted otherwise, use the standard hardware torque specification chart.



REF. PART NO.	DESCRIPTION	REF. PART NO.	DESCRIPTION		
1	311999GS	HANDLE	18	94856GS	WASHER
2	311998GS	GRIP, Handle	19	312022GS	HUBCAP
3	312000GS	GRIP, Handle	20	312021GS	WHEEL
4	75477GS	SCREW	21	5025210YP	PIN, Hair, .0915 x 1-7/8
5	318677GS	BOLT	22	312023GS	AXLE
6	187104GS	WASHER			
7	49820GS	NUT			
8	207825GS	BOLT			
9	312016GS	KNOB			
10	312015GS	SPRING			
11	312017GS	PIN			
12	192310GS	MOUNT, Vibration			
13	52857GS	NUT			
14	42568GS	BOLT			
15	311994GS	SUPPORT, Leg			
16	46526GS	WASHER			
17	45772GS	NUT			

Footnotes

The above parts group applies to the following Mfg. Nos.:

030471-0 - 8,000 Watt Briggs & Stratton

Not for
Reproduction

Not for
Reproduction

Hardware Identification & Torque Specifications

Torque Specification Chart								
FOR STANDARD METRIC MACHINE HARDWARE (Tolerance ± 20%)								
Property Class	5.6		8.8		10.9		12.9	
	Class 5.6		Class 8.8		Class 10.9		Class 12.9	
Size Of Hardware	in/lbs		in/lbs		in/lbs		in/lbs	
	ft/lbs	Nm.	ft/lbs	Nm.	ft/lbs	Nm.	ft/lbs	Nm.
M3	5.88	.56	13.44	1.28	19.2	1.80	22.92	2.15
M4	13.44	1.28	30.72	2.90	43.44	4.10	52.56	4.95
M5	26.4	2.50	60.96	5.75	5.97	8.10	7.15	9.7
M6	44.64	4.3	7.3	9.9	10.3	14	12.1	16.5
M7	5.2	7.1	12.1	16.5	16.9	23	19.9	27
M8	7.7	10.5	17.7	24	25	34	29	40
M10	15	21	35	48	50	67	59	81
M12	26	36	61	83	86.2	117	103	140
M14	42	58	101	132	136	185	162	220
M16	64	88	147	200	210	285	250	340
M18	89	121	202	275	287	390	346	470
M20	126	171	290	390	405	550	486	660
M22	169	230	390	530	559	745	656	890
M24	217	295	497	375	708	960	840	1140
M27	320	435	733	995	1032	1400	1239	1680
M30	435	590	995	1350	1401	1900	1681	2280
M33	590	800	1349	1830	1902	2580	2278	3090
M36	759	1030	1740	2360	2441	3310	2935	3980
M39	988	1340	2249	3050	3163	4290	3798	5150

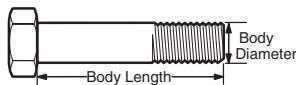
The guides and ruler furnished below are designed to help you select the appropriate hardware.



Nut, M8

Thread Diameter (mm)
Inside Diameter (in)
Threads per inch

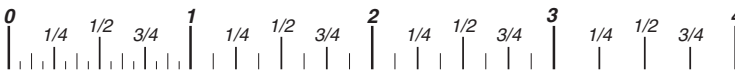
Nut, 1/2-16



Screw, M8- 1.25 x 25

Thread Diameter (mm)
Body Diameter
Distance between threads (mm)
Threads per inch
Body Length (mm)
Body Length (in)

Screw, 1/2- 16 x 2



Standard Hardware Sizing

When a washer or nut is identified as 1/2" (M8), this is the *Nominal size*, meaning the *inside diameter* is 1/2 inch (8mm metric thread diameter); if a second number is present it represents the *threads per inch* (distance between threads).

When bolt or capscrew is identified as 1/2 - 16 x 2" (M8 - 1.25 x 50), this means the *Nominal size*, or body diameter is 1/2 inch (8mm metric thread diameter), the second number, 16, represents the *threads per inch*, (1.25 thread diameter). The final number is the body length of the bolt or screw, 2 inches (50mm).

Torque Specification Chart						
FOR STANDARD MACHINE HARDWARE (Tolerance ± 20%)						
Hardware Grade	No Marks		SAE Grade 5		SAE Grade 8	
	SAE Grade 2		SAE Grade 5		SAE Grade 8	
Size Of Hardware	in/lbs		in/lbs		in/lbs	
	ft/lbs	Nm.	ft/lbs	Nm.	ft/lbs	Nm.
8-32	19	2.1	30	3.4	41	4.6
8-36	20	2.3	31	3.5	43	4.9
10-24	27	3.1	43	4.9	60	6.8
10-32	31	3.5	49	5.5	68	7.7
1/4-20	66	7.6	8	10.9	12	16.3
1/4-28	76	8.6	10	13.6	14	19.0
5/16-18	11	15.0	17	23.1	25	34.0
5/16-24	12	16.3	19	25.8	29	34.0
3/8-16	20	27.2	30	40.8	45	61.2
3/8-24	23	31.3	35	47.6	50	68.0
7/16-14	30	40.8	50	68.0	70	95.2
7/16-20	35	47.6	55	74.8	80	108.8
1/2-13	50	68.0	75	102.0	110	149.6
1/2-20	55	74.8	90	122.4	120	163.2
9/16-12	65	88.4	110	149.6	150	204.0
9/16-18	75	102.0	120	163.2	170	231.2
5/8-11	90	122.4	150	204.0	220	299.2
5/8-18	100	136	180	244.8	240	326.4
3/4-10	160	217.6	260	353.6	386	525.0
3/4-16	180	244.8	300	408.0	420	571.2
7/8-9	140	190.4	400	544.0	600	816.0
7/8-14	155	210.8	440	598.4	660	897.6
1-8	220	299.2	580	788.8	900	1,244.0
1-12	240	326.4	640	870.4	1,000	1,360.0

NOTES

- These torque values are to be used for all hardware excluding: locknuts, self-tapping screws, thread forming screws, sheet metal screws and socket head setscrews.
- Recommended seating torque values for locknuts:
 - for prevailing torque locknuts - use 65% of grade 5 torques.
 - for flange whizlock nuts and screws - use 135% of grade 5 torques.
- Unless otherwise noted on assembly drawings, all torque values must meet this specification.

Common Hardware Types

Hex Head Capscrew



Washer



Carriage Bolt



Hex Nut

Wrench & Fastener Size Guide

1/4" Bolt or Nut Wrench—7/16"	5/16" Bolt or Nut Wrench—1/2"	3/8" Bolt or Nut Wrench—9/16"	7/16" Bolt or Nut Wrench (Bolt)—5/8" Wrench (Nut)—11/16"	1/2" Bolt or Nut Wrench—3/4"
M6 Bolt or Nut Wrench—10mm	M8 Bolt or Nut Wrench—13mm	M10 Bolt or Nut Wrench—17mm	M12 Bolt or Nut Wrench—19mm	M14 Bolt or Nut Wrench—22mm



Not for
Reproduction

Briggs & Stratton Power Products Group

Copyright© 2012 Briggs & Stratton Power Products Group. All rights reserved. No part of this page can be reproduced or transmitted in any form by any means without the express written permission of Briggs & Stratton Power Products Group.