

Installation Instructions

ZTR Headlight Kit

Part No. 5600891

Fits Ferris Models IS700Z, IS2100Z, IS2600Z,
IS3200Z, F160Z, F210Z & F320Z

Fits Snapper Pro Models S125XT, S150XT & S200XT

Kit Contents					
Part No.	Qty.	Description	Part No.	Qty.	Description
5104611	1	HEADLIGHT, LED	5025145X22	4	BOLT, 5/16-18 X 2-3/4, CARRIAGE
5104745	1	WIRE HARNESS, HEADLIGHT KIT	5025392	4	NUT, 5/16-18 HEX NYLOCK FLANGE
5414126A	1	PLATE, MOUNT, HEADLIGHT KIT	5021029	9	TIE, SELF-LOCKING, 12"
5414127A	1	PLATE, SUPPORT, HEADLIGHT KIT	5022222	1	RETAINER, HEADLIGHT SWITCH
1703799	1	SWITCH, HEADLIGHT			

⚠ WARNING



Remove the ignition key prior to performing maintenance on the unit.

Before beginning any service work turn off the PTO, engage the parking brake, turn off the ignition, remove the ignition key, and disconnect the spark plug wire(s).

INSTALLING THE HEADLIGHT KIT

- Assemble the headlight (**A**, **Figure 1**) to the mounting bracket (**B**) using the lock washer (**C**) and nut (**D**) that is currently pre-installed onto the headlight stud.
- Position the mounting bracket on top of the ROPS and as far to the trim side as possible. See *Figure 2* as a reference for the correct position.
- Position the support bracket (**E**) on the underside of the ROPS and secure the headlight in place using four (4) 5/16-18 X 2-3/4 carriage bolts (**F**) and nylock flange nuts (**G**).
- Connect the headlight wire (**A**, **Figure 2**) to the headlight wire harness (**B**) and secure the harness in position along the ROPS using the provided zip ties (**C**).
- Remove the plug (**A**, **Figure 3**) from the control panel and install the headlight switch (**B**) using the retainer (**C**) to secure it in place.

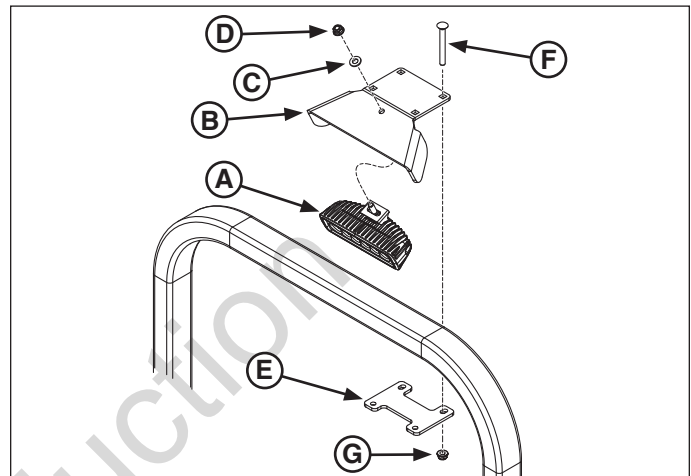


Figure 1. Mounting the Headlight

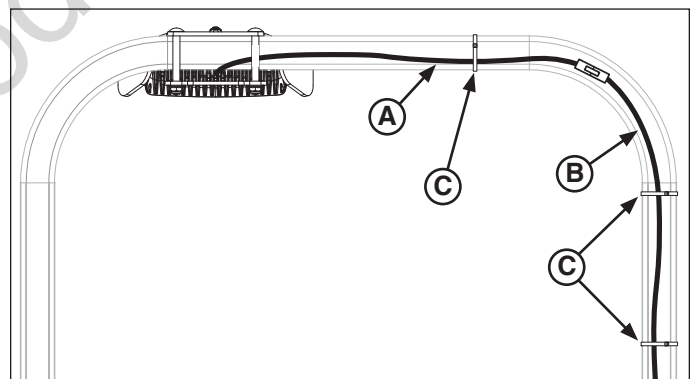


Figure 2. Routing the Wire Harness

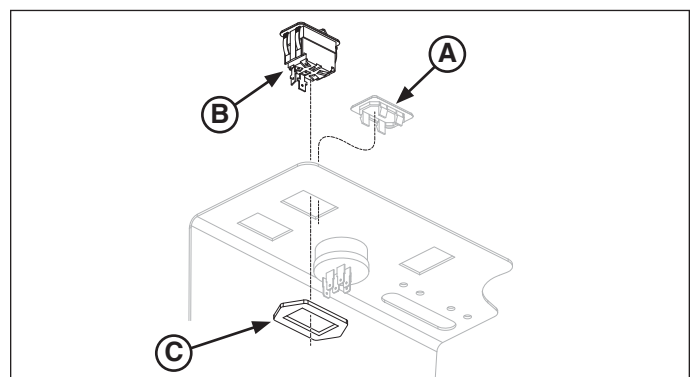


Figure 3. Installing the Headlight Switch

6. Make the connection between the two female leads on the headlight wire harness and the headlight switch (**A**, **Figure 4**).
7. Check your unit to see if there is a connection (**B**) between the main wire harness and terminal "A" of the ignition switch.

NOTE: If terminal "A" is open on the ignition switch please skip to *Step 9*.

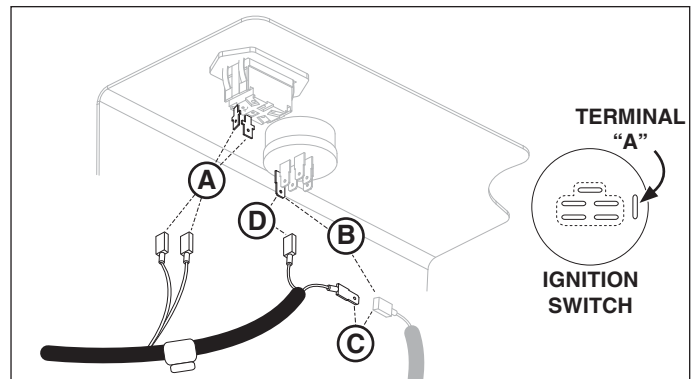


Figure 4. Connecting the Wire Harness

8. If there is a connection (**B**), disconnect the female lead on the main wire harness and connect it to the male lead of the headlight harness (**C**).
9. Make the connection between the female lead on the headlight wire harness and terminal "A" on the ignition switch (**D**).
10. The remaining ground lead on the headlight wire harness should be connected to the negative terminal on the battery.

NOTE: If connecting the ground lead to the battery is not feasible the secondary grounding location would be the engine block.

11. Using the remaining zip ties, be sure to secure any loose slack in headlight wire harness safely out of the way of any moving components.